

Venture doubles Nickel-Copper-PGE landholding by securing two highly prospective 20-kilometre long Ni-Cu-PGE targets at Kulin

HIGHLIGHTS

Venture has significantly expanded its Ni-Cu-PGE portfolio through the recent acquisition of highly prospective tenure at the Company's Kulin Project. The acquisition sees the Company effectively double its Ni-Cu-PGE portfolio, which already includes the South West Ni-Cu-PGE Project, currently joint ventured with Chalice Mining (ASX: CHN);

Within the acquired tenure, Venture has secured two highly prospective, 20 kilometre long interpreted mafic-ultramafic intrusive complexes (Refer Figure 2), sitting along strike of the Jimperding Metamorphic belt which hosts Chalice's Julimar Ni-Cu-PGE discovery (Refer Figure 1);

The southern 20km long Ni-Cu-PGE target is defined by aeromagnetic anomalies and coincidental +500ppm chromium surface samples, combined with several reconnaissance surface samples assaying over 30ppb platinum (Pt) + palladium (Pd) (peak of 60ppb Pt + Pd) (Refer Figure 3), is now considered a priority target for the Company;

In the southern part of the new tenure, containing the priority Ni-Cu-PGE target, Venture can earn up to 100% in E70/5084 (173km²), which already contains highly significant shallow (<25 metre deep) drill intersections from a historic reconnaissance drilling program with assays up to 0.11 g/t Pt, 0.13g/t Pd, 0.14% nickel & 0.02% cobalt (see Tables 1, 2 & 3);

In addition to the acquisition, Venture has also applied for another 121km² of exploration tenure at Kulin bringing the total project area to 606km² of highly prospective Ni-Cu-PGE tenure;

The Company will now look to complete a detailed work program focussed on the **high priority, southern Ni-Cu-PGE target**. The program will include surface sampling, and an airborne electromagnetic (EM) survey targeting the entire 20 kilometre long interpreted mafic-ultramafic intrusive complex;

In addition to the new Ni-Cu-PGE targets acquired at Kulin, the Company has also recently completed a **maiden drill program, at Kulin, which has delivered a substantial gold intersection** with mineralised intervals of up to **18 metres @ 0.6 g/t gold (Au)** in KLD001 from 329 metres (m) including higher grade zones of **9 m @ 1.2 g/t Au** from 338m and **3 m @ 3.4g/t Au** from 341m (refer to Figures 4 & 5 and see Tables 4, 5 & 6).

Venture's Managing Director commented "Venture has made some excellent acquisitions around the Kulin Project, which sees the Company now control a highly sort after ground position in close vicinity to the recently discovered Julimar Ni-Cu-PGE deposit. When paired with our Chalice JV on the South West Project, Venture now has an enviable portfolio of Ni-Cu-PGE assets. These compliment Kulin's gold potential, which has been highlighted by our latest drill results situated within what is considered to be an exciting emerging Western Australian Gold Province. This gives the Company great confidence in making significant discoveries at Kulin in the near future."

Venture Minerals Limited (**ASX code: VMS**) (“Venture” or the “Company”) is pleased to announce that Venture has significantly expanded its Ni-Cu-PGE portfolio through the recent acquisition of highly prospective tenure at the Company’s Kulin Project. The acquisition sees the Company effectively double its Ni-Cu-PGE portfolio, which already includes the South West Ni-Cu-PGE Project, currently joint ventured with Chalice Mining (ASX: CHN). Within, the acquired tenure, Venture has secured two highly prospective 20 kilometre long interpreted mafic-ultramafic intrusive complexes sitting along strike of the Jimperding Metamorphic belt which hosts Chalice’s Julimar Ni-Cu-PGE discovery.

The southern 20km long Ni-Cu-PGE target is defined by aeromagnetic anomalies and coincidental +500ppm chromium surface samples, combined with several reconnaissance surface samples assaying over 30ppb Pt + Pd (peak of 60ppb Pt + Pd), is now considered a priority target for the Company.

In the southern part of the new tenure containing the priority Ni-Cu-PGE target, Venture can earn up to 100% in E70/5084 (173km²) (see page 3 for full terms of the earn-in agreement) which already contains highly significant shallow (<25 metre deep) drill intersections from a historic four hole reconnaissance drilling program with assays up to 0.11 g/t Pt, 0.13g/t Pd, 0.14% nickel, 0.02% cobalt & 0.12g/t gold.

In addition to the acquisition, Venture has also applied for another 121km² of exploration tenure (E70/5779 & E70/5801) at Kulin bringing the total project area to 606km² of highly prospective Ni-Cu-PGE tenure. This new application at the northern end of the project contains the second 20km long Ni-Cu-PGE target which is also defined by aeromagnetic anomalies and coincidental +500ppm chromium surface samples from reconnaissance programs by previous explorers. The Company is planning to do a follow-up surface sampling program shortly.

Venture will now look to complete a detailed work program focused on the high priority, southern Ni-Cu-PGE target. The program will include surface sampling, and an airborne electromagnetic (EM) survey targeting the entire 20 kilometre long interpreted mafic-ultramafic intrusive complex, the outcomes of which may lead to drill testing in the future.

A third mafic-ultramafic intrusive complex (~10 kms long) has been interpreted in the northern end of the project mostly within Venture’s original tenement (E70/5077) and likewise is defined by aeromagnetic anomalies and coincidental +500ppm chromium surface samples. Again, further follow-up surface sampling is required.

In addition to the new Ni-Cu-PGE targets acquired at Kulin, the Company has also recently completed a maiden drill program, at Kulin, which has delivered a substantial gold intersection with mineralised intervals of up to 18 metres @ 0.6 g/t Au in KLD001 from 329 m including higher grade zones of 9 m @ 1.2 g/t Au from 338m and 3 m @ 3.4g/t Au from 341m.

Results from this reconnaissance style drilling at Kulin intersecting gold approximately 250 metres vertically below the surface at such an early stage of exploration for the project, where earlier soil sampling and trenching all at surface, had respectively delivered high order gold in soil anomalies and substantial mineralised intervals of up to 31 metres at 1.0g/t Au from KUT02 and 20 metres @ 0.6g/t Au from KUT04, all bodes well for future follow-up drill campaigns.

The significance of the results from the maiden drill program cannot be underestimated as these holes are the only meaningful (in terms of depth) drill holes within a 40km radius of the Kulin project within an emerging Western Australian Gold Province, already host to major gold deposits such as Boddington >30 Mozs¹ (currently Australia's 2nd largest gold producer²), Edna May 2.2 Mozs³, Katanning 1.2Mozs⁴ and Tampia 0.7Mozs⁵.

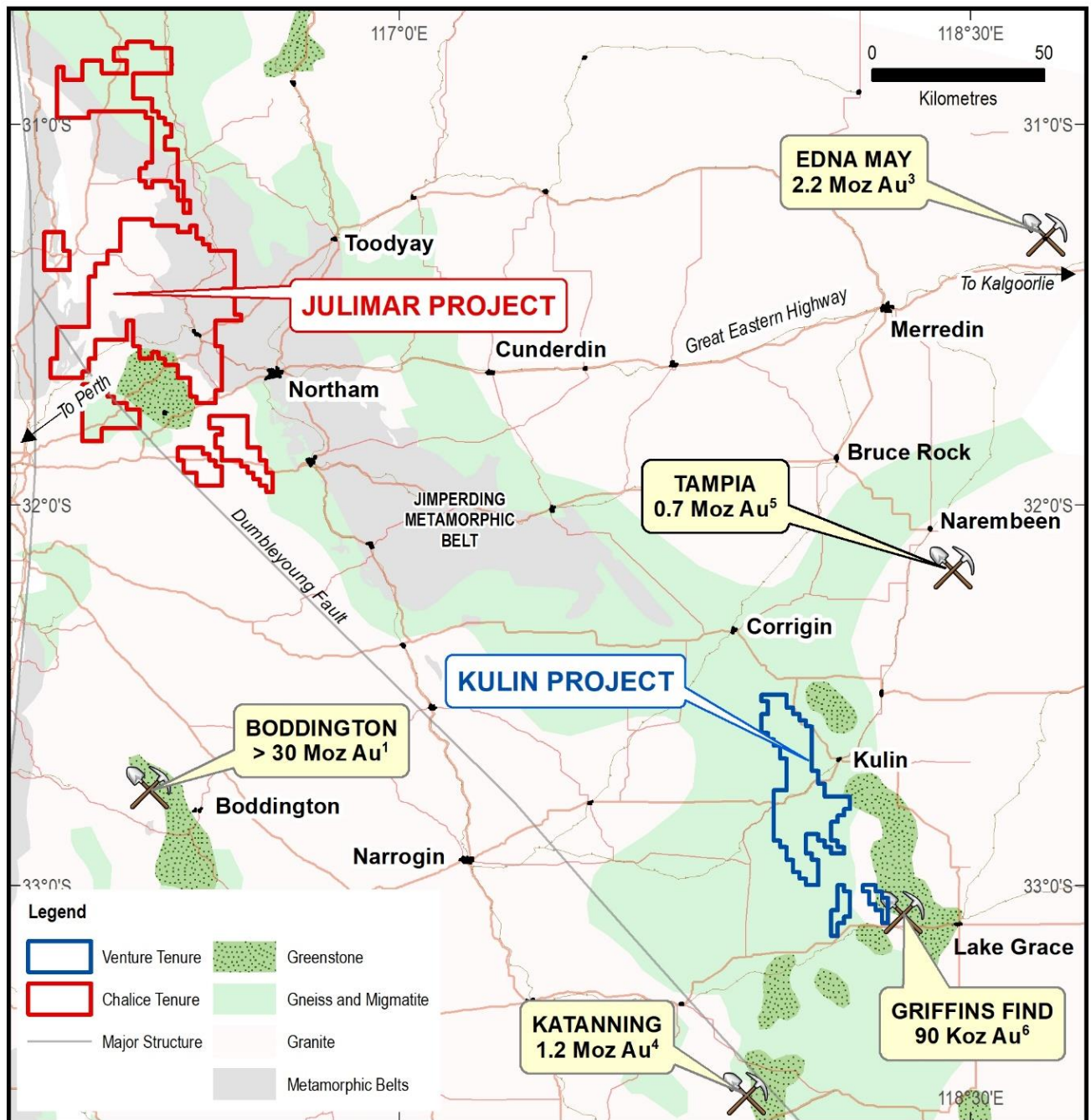
Under the earn-in agreement with Exactical Pty Ltd for E70/5084, Venture may earn:

- A 51% JV interest in the Project by spending \$250,000 within two years, including a minimum of \$125,000 in the first year.
- An 80% JV interest in the Project by spending a further \$500,000 over the following two years after paying the Vendor \$10,000 cash.
- Venture will then free-carry the Vendor's 20% interest up to the completion of a Bankable Feasibility Study after paying the Vendor \$20,000 cash.
- Upon completion of the Bankable Feasibility Study the Vendor can elect to contribute or dilute. If the Vendor's interest in the Project dilutes to below 5%, the Vendor's interest will convert to a royalty equivalent to 2% of the net smelter return.
- Venture may withdraw at any time after meeting the minimum expenditure commitment. All other terms are consistent with an industry standard joint venture arrangement.

The current Golden Grove North drill program has been put on hold after 6 diamond core holes were completed for 1907 metres and 5 drill holes were surveyed using downhole electromagnetic ("DHEM") techniques. The company is currently awaiting final results from the DHEM survey and assay results from the diamond drill core that has been completely geologically logged and sampled.

Refer to Footnotes on Page 24

Figure One | Kulin Project Location Map on Regional Geology



Refer to Footnotes on Page 24

Figure Two | Kulin Project – showing interpreted Mafic-Ultramafic Intrusive Complexes on aeromagnetics

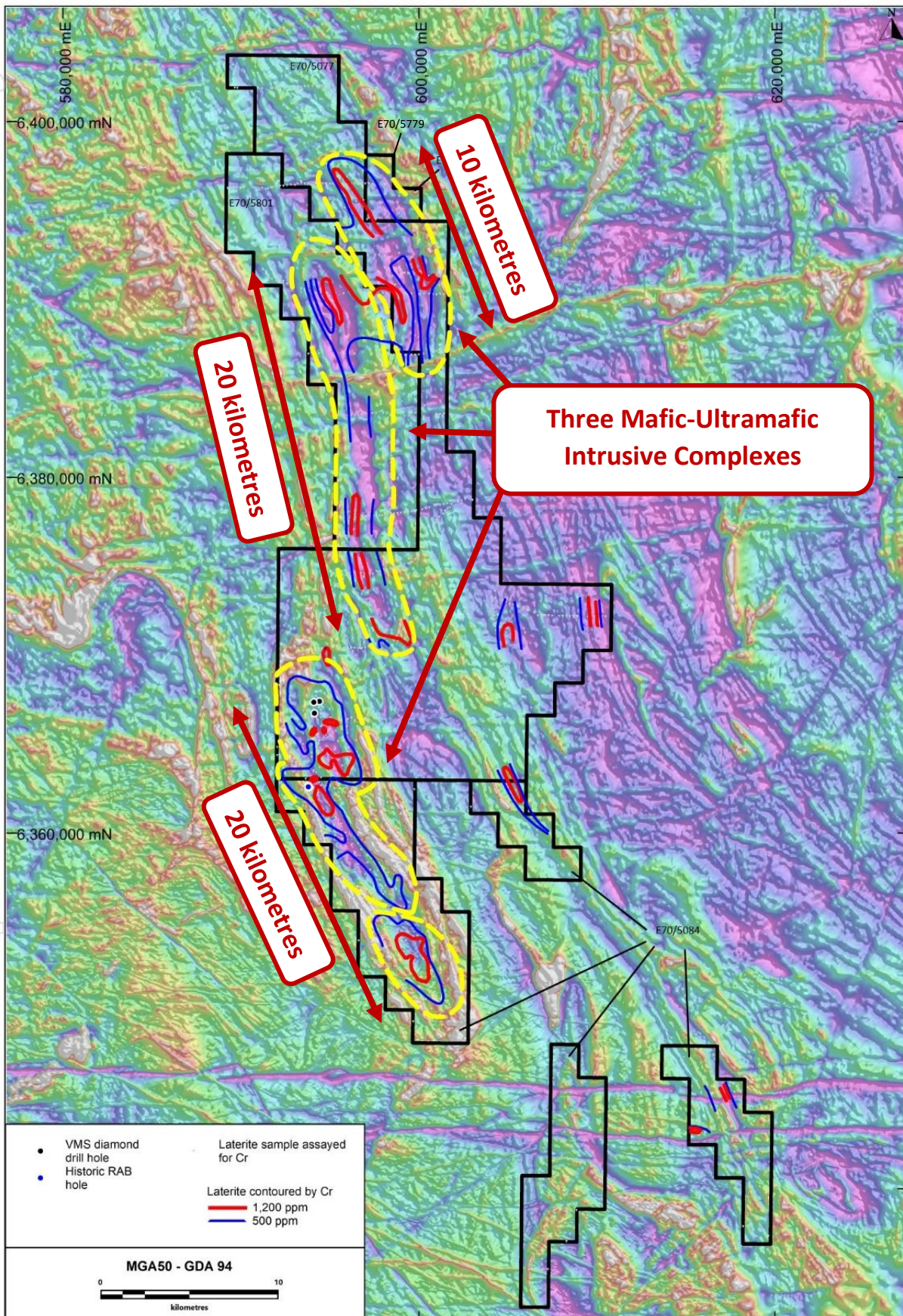


Figure Three | Kulin – the priority southern Ni-Cu-PGE target with Chromium in laterite contours, Pt + Pd laterite results and Historic Drill Hole mineralised intersections on aeromagnetics

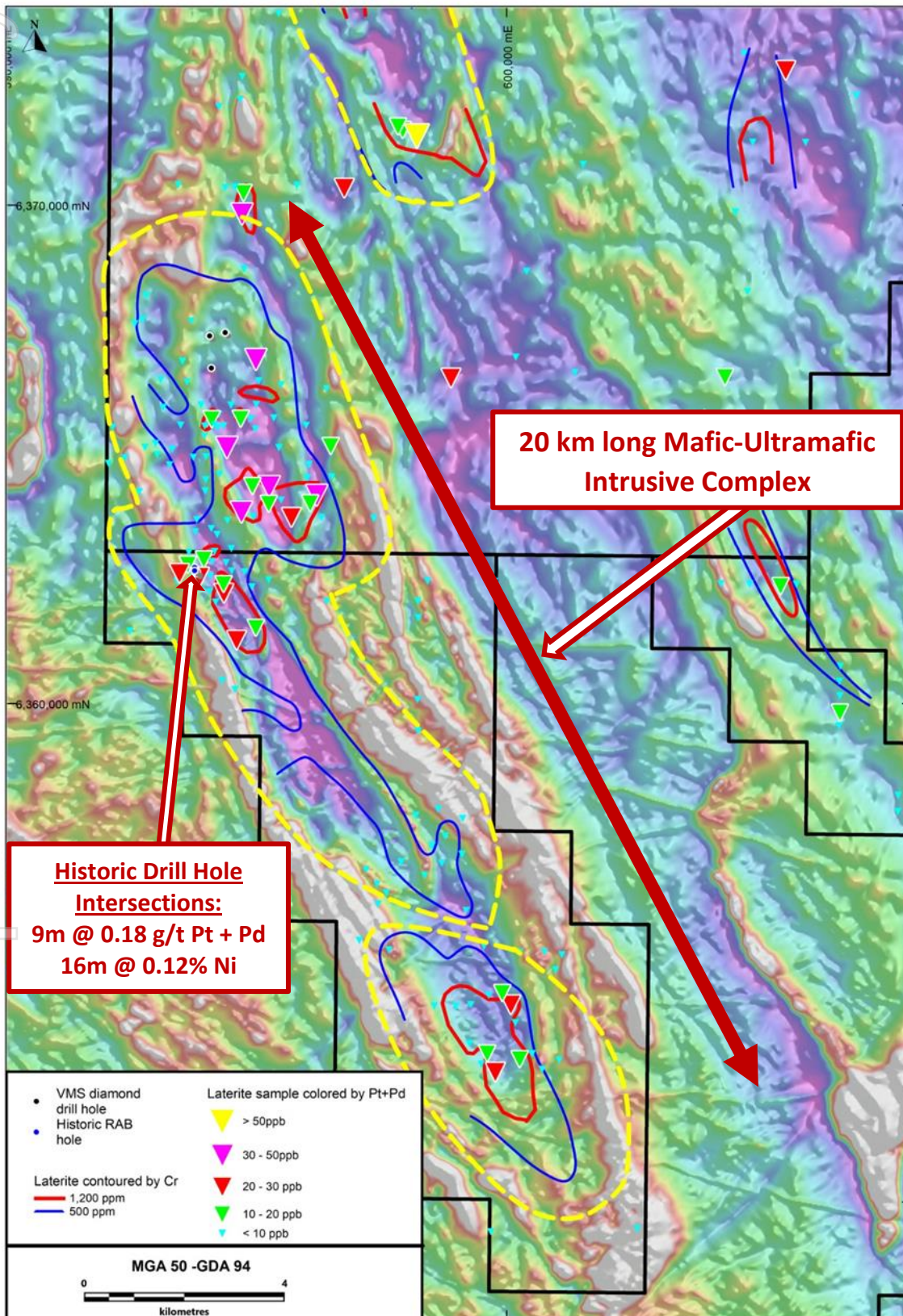


Figure Four | Kulin Project - Gold in Soil contours on aeromagnetics with Trench and Recent Drill Hole locations

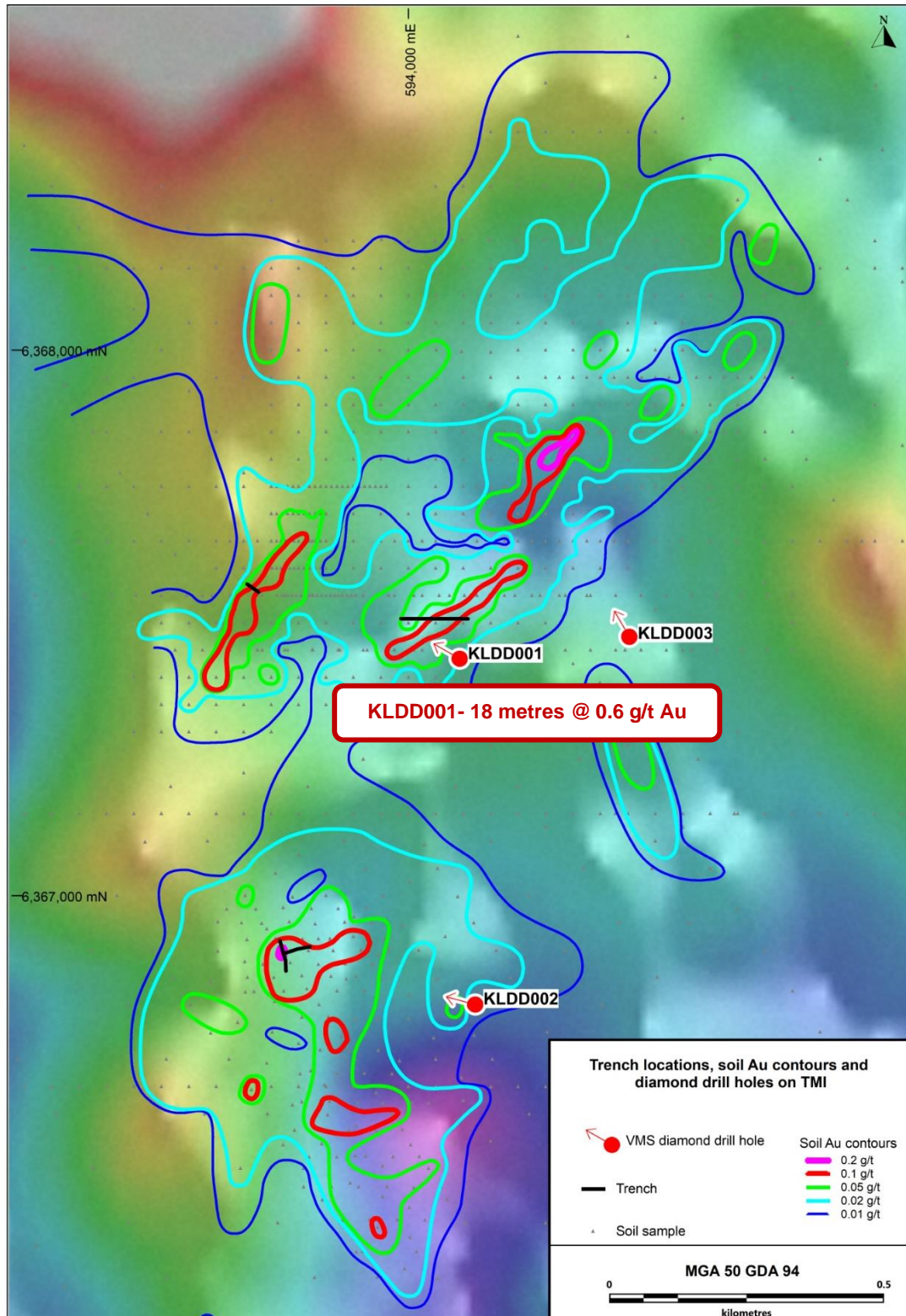
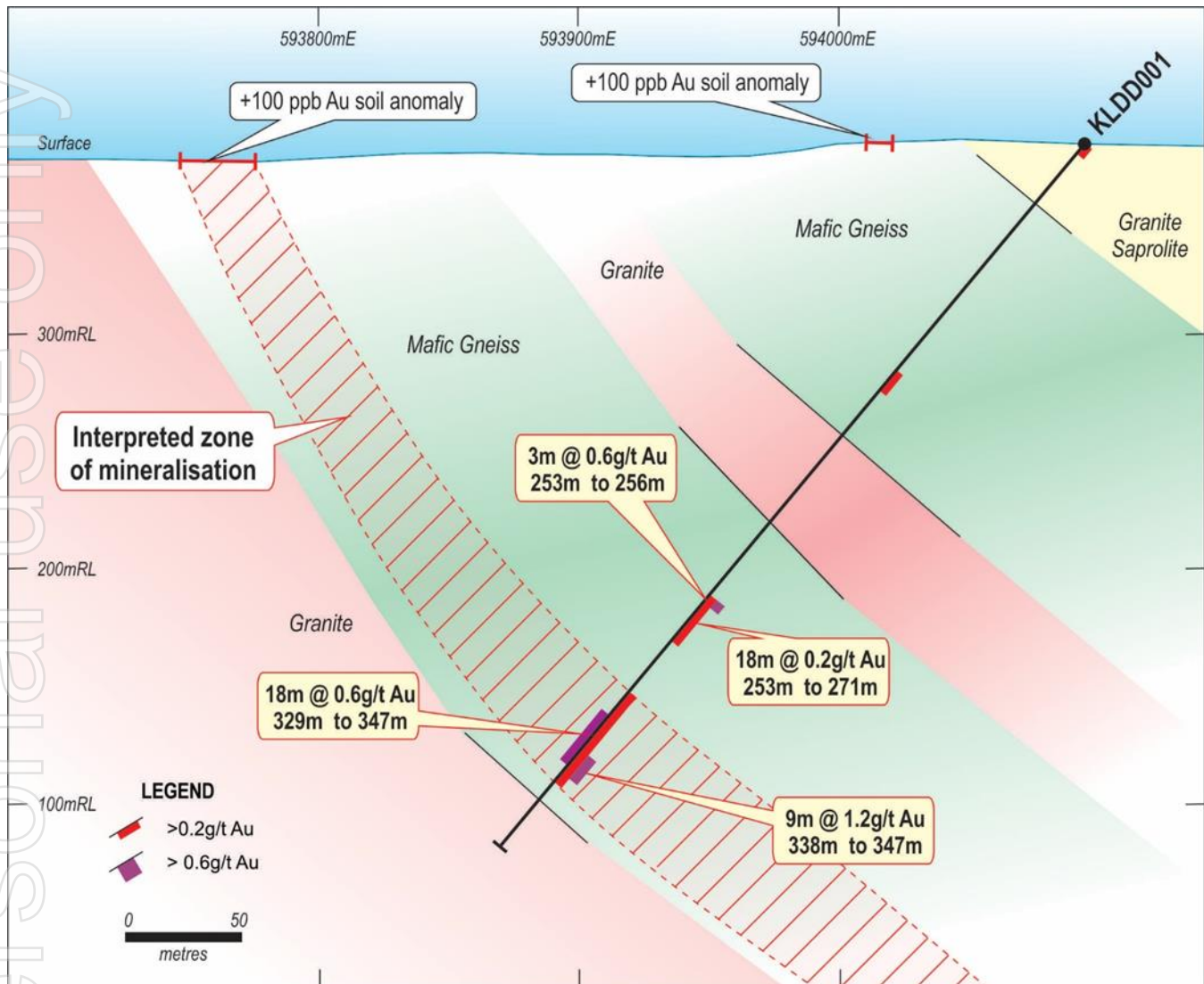


Figure Five | Cross Section through KLD001 at Kulin



KULIN HISTORIC DRILL HOLE RESULTS

Table 1: Drill hole locations

Hole	East (m) MGA Zone 50 GDA94	North (m) MGA Zone 50 GDA94	RL AHD (m)	Azimuth (°) UTM	Dip (°)	End of hole (m)
HOLE 1	593824	6362633	370	0	-90	19
HOLE 2	593783	6362750	365	0	-90	22
HOLE 3	593832	6362664	369	0	-90	10
HOLE 4	593783	6362685	365	0	-90	22

Table 2: Hole 1, Hole 2 & Hole 4 mineralised intersections

Hole	From (m)	To (m)	Interval (m)	Pt (g/t)	Pd (g/t)	Pt + Pd (g/t)	Au (g/t)	Ni (%)	Co (%)
HOLE 1	1	10	9	0.077	0.101	0.178	0.006	0.04	0.01
includes	1	3	2	0.077	0.12	0.197	0.003	0.05	0.01
includes	8	10	2	0.097	0.11	0.207	0.011	0.03	0.01
HOLE 2	0	20	20	0.013	0.012	0.025	0.006	0.11	0.02
includes	5	8	3	0.018	0.013	0.031	0.003	0.13	0.02
HOLE 4	1	3	2	0.066	0.093	0.159	0.008	-	-

Table 3: Hole 1, Hole 2, Hole 3 & Hole 4 assays

Hole	From (m)	To (m)	Interval (m)	Au (ppb)	Pt (ppb)	Pd (ppb)	P+ Pd (ppb)	Ni (ppm)	Co (ppm)
HOLE 1	0	1	1	5	35	45	80	310	125
HOLE 1	1	2	1	4	85	130	215	478	110
HOLE 1	2	3	1	3	70	110	180	526	95
HOLE 1	3	4	1	6	65	80	145	538	85
HOLE 1	4	5		8	65	70	135	584	80
HOLE 1	5	6	1	5	75	85	160	552	90
HOLE 1	6	7	1	4	75	115	190	398	70
HOLE 1	7	8	1	6	60	95	155	352	60
HOLE 1	8	9	1	12	105	105	210	300	60
HOLE 1	9	10	1	10	90	115	205	268	50
HOLE 1	10	11	1	7	30	65	95	120	20
HOLE 1	11	12	1	5	50	30	80	248	55
HOLE 1	12	13	1	12	25	20	45	280	75
HOLE 1	13	14	1	9	10	5	15	310	65
HOLE 1	14	15	1	10	5	<5	5	310	55
HOLE 1	15	16	1	21	5	5	10	242	65
HOLE 1	16	17	1	5	<5	5	5	140	55
HOLE 1	17	18	1	9	5	<5	5	136	50

Hole	From (m)	To (m)	Interval (m)	Au (ppb)	Pt (ppb)	Pd (ppb)	P+ Pd (ppb)	Ni (ppm)	Co (ppm)
HOLE 1	18	19	1	3	<5	<5	<5	122	60
HOLE 2	0	1	1	6	20	15	35	852	90
HOLE 2	1	2	1	1	20	10	30	1000	95
HOLE 2	2	3	1	1	10	15	25	696	80
HOLE 2	3	4	1	3	10	10	20	896	105
HOLE 2	4	5	1	3	20	20	40	1010	185
HOLE 2	5	6	1	4	25	20	45	1200	190
HOLE 2	6	7	1	3	15	10	25	1320	180
HOLE 2	7	8	1	2	15	10	25	1390	195
HOLE 2	8	9	1	10	10	5	15	1140	230
HOLE 2	9	10	1	16	15	10	25	1110	150
HOLE 2	10	11	1	6	15	15	30	1170	175
HOLE 2	11	12	1	7	10	10	20	1230	180
HOLE 2	12	13	1	8	10	10	20	1190	170
HOLE 2	13	14	1	11	10	15	25	1180	155
HOLE 2	14	15	1	8	10	20	30	1230	150
HOLE 2	15	16	1	27	5	10	15	700	100
HOLE 2	16	17	1	3	10	10	20	1220	150
HOLE 2	17	18	1	3	10	10	20	1320	165
HOLE 2	18	19	1	2	10	10	20	1300	155
HOLE 2	19	20	1	3	5	5	10	1150	130
HOLE 2	20	21	1	10	55	35	90	748	100
HOLE 2	21	22	1	2	80	65	145	396	70
HOLE 3	2	3	1	1	6	3	9	NA	NA
HOLE 3	3	4	1	3	6	5	11	NA	NA
HOLE 3	4	5	1	1	4	4	8	NA	NA
HOLE 3	5	6	1	2	5	5	10	NA	NA
HOLE 3	6	7	1	1	6	7	13	NA	NA
HOLE 3	7	8	1	1	8	7	15	NA	NA
HOLE 3	8	9	1	1	4	4	8	NA	NA
HOLE 3	9	10	1	1	7	7	14	NA	NA
HOLE 4	1	2	1	11	69	105	174	NA	NA
HOLE 4	2	3	1	5	63	82	145	NA	NA
HOLE 4	3	4	1	2	10	9	19	NA	NA
HOLE 4	4	5	1	2	25	9	34	NA	NA
HOLE 4	5	6	1	2	6	2	8	NA	NA
HOLE 4	6	7	1	2	7	5	12	NA	NA
HOLE 4	7	8	1	2	10	9	19	NA	NA
HOLE 4	8	9	1	2	6	8	14	NA	NA
HOLE 4	9	10	1	2	5	5	10	NA	NA
HOLE 4	10	11	1	16	13	25	38	NA	NA

Hole	From (m)	To (m)	Interval (m)	Au (ppb)	Pt (ppb)	Pd (ppb)	P+ Pd (ppb)	Ni (ppm)	Co (ppm)
HOLE 4	11	12	1	2	14	19	33	NA	NA
HOLE 4	12	13	1	2	14	19	33	NA	NA
HOLE 4	13	14	1	3	15	14	29	NA	NA
HOLE 4	14	15	1	<1	7	6	13	NA	NA
HOLE 4	15	16	1	1	8	5	13	NA	NA
HOLE 4	16	17	1	120	2	3	5	NA	NA
HOLE 4	17	18	1	15	4	6	10	NA	NA
HOLE 4	18	19	1	6	2	1	3	NA	NA
HOLE 4	19	20	1	2	1	1	2	NA	NA
HOLE 4	20	21	1	4	2	2	4	NA	NA
HOLE 4	21	22	1	3	3	2	5	NA	NA

NA=Not Assayed

KULIN RECENT DRILL HOLE RESULTS

Table 4: Drill hole locations

Hole	East (m) MGA Zone 50 GDA94	North (m) MGA Zone 50 GDA94	RL AHD (m)	Azimuth (°) UTM	Dip (°)	End of hole (m)
KLDD001	594095	6367445	380	300	-50	390.1
KLDD002	594123	6366813	385	285	-50	432
KLDD003	594404	6367482	372	330	-50	488.9

Table 5: KLDD001, KLDD002 & KLDD003 mineralised intersections

Hole	From (m)	To (m)	Interval (m)	Au (g/t)
KLDD001	129	137	8	0.19
and	253	256	3	0.61
and	312	347	35	0.37
includes	329	347	18	0.63
includes	338	347	9	1.2
includes	341	344	3	3.4
KLDD002	412.79	416	3.21	0.31
KLDD003	191	195.1	4.1	0.21
and	290.36	293.55	3.19	0.23

Table 6: KLDD001, KLDD002 & KLDD003 assays

Hole	From (m)	To (m)	Interval (m)	Au (g/t)	Pt (ppb)	Pd (ppb)	Pt + Pd (ppb)	Cu (ppm)	Ni (ppm)	Co (ppm)
KLDD001	0	4	4	0.105	2.8	4.7	7.5	37	77	13
KLDD001	4	8	4	0.022	1.5	2.1	3.6	25	69	9
KLDD001	8	12	4	0.033	1.9	2.6	4.5	32	46	5
KLDD001	12	16	4	0.014	2.7	8	10.7	62	71	5
KLDD001	16	20	4	0.031	3	7	10	73	96	6
KLDD001	20	24	4	0.037	2.7	4	6.7	163	84	7
KLDD001	24	28	4	0.031	1.7	3.7	5.4	196	112	15

Hole	From (m)	To (m)	Interval (m)	Au (g/t)	Pt (ppb)	Pd (ppb)	Pt + Pd (ppb)	Cu (ppm)	Ni (ppm)	Co (ppm)
KLDD001	28	32	4	0.007	1.7	3	4.7	185	156	30
KLDD001	32	36	4	0.005	1.6	3.8	5.4	153	124	23
KLDD001	36	40	4	0.008	2.8	4.4	7.2	185	161	59
KLDD001	40	42	2	0.117	1.1	1.2	2.3	99	86	38
KLDD001	42	44	2	0.145	1.6	1.6	3.2	136	89	37
KLDD001	44	46	2	0.049	1.4	0.8	2.2	110	103	54
KLDD001	46	48	2	0.093	1.2	0.7	1.9	111	102	41
KLDD001	48	50	2	0.02	1.3	1	2.3	96	116	44
KLDD001	50	52	2	0.139	2	2.1	4.1	44	104	53
KLDD001	52	54	2	0.127	1.8	3	4.8	69	193	33
KLDD001	54	56	2	0.01	1.5	2.7	4.2	246	239	41
KLDD001	56	58	2	0.005	1.4	1	2.4	57	132	43
KLDD001	58	60	2	0.005	1.4	1.1	2.5	66	147	43
KLDD001	60	62	2	0.007	1.4	1	2.4	92	135	43
KLDD001	62	64	2	0.003	0.8	0.7	1.5	41	78	21
KLDD001	64	66	2	0.003	1.3	0.9	2.2	75	126	46
KLDD001	66	68	2	0.005	1.7	1.3	3	90	194	49
KLDD001	68	70	2	0.004	1.7	1.2	2.9	78	135	48
KLDD001	70	72	2	0.008	1.5	1	2.5	110	134	50
KLDD001	72	74	2	0.005	1.3	0.9	2.2	61	133	47
KLDD001	74	76	2	0.025	1.4	0.9	2.3	134	139	50
KLDD001	76	78	2	0.046	1.2	1	2.2	107	134	50
KLDD001	78	80	2	0.003	1.3	0.9	2.2	68	131	48
KLDD001	80	82	2	0.01	1.2	0.9	2.1	68	125	47
KLDD001	82	84	2	0.012	1.2	0.9	2.1	66	127	41
KLDD001	84	86	2	0.003	1.5	1.1	2.6	73	159	49
KLDD001	86	88	2	0.002	1.5	1.1	2.6	66	150	47
KLDD001	88	90	2	0.112	1.4	1	2.4	149	140	50
KLDD001	90	92	2	0.004	1.6	1.1	2.7	76	160	50
KLDD001	92	92.2	0.2	0.005	1.5	1.1	2.6	53	168	44
KLDD001	92.2	95	2.8	0.089	1.4	1.1	2.5	106	145	49
KLDD001	95	98	3	0.034	1.6	1.3	2.9	120	178	50
KLDD001	98	101	3	0.015	1.3	1	2.3	81	142	44
KLDD001	101	104	3	0.008	1.3	1	2.3	71	150	47
KLDD001	104	107	3	0.022	2.1	1.8	3.9	100	236	49
KLDD001	107	110	3	0.024	1.6	1.2	2.8	76	150	44
KLDD001	110	113	3	0.13	1.6	1.3	2.9	104	171	49
KLDD001	113	116.33	3.33	0.013	1.4	1.1	2.5	80	144	50
KLDD001	116.33	117.43	1.1	0.002	<0.5	<0.5	<0.5	15	10	11
KLDD001	117.43	120	2.57	0.029	1.4	1.1	2.5	98	165	48
KLDD001	120	123	3	0.039	1.6	1.1	2.7	113	165	54
KLDD001	123	126	3	0.016	1.4	1	2.4	117	150	48
KLDD001	126	129	3	0.003	1.3	0.9	2.2	54	133	49
KLDD001	129	131	2	0.131	1.5	1	2.5	110	150	54
KLDD001	131	134	3	0.157	1.8	1.2	3	127	158	51
KLDD001	134	137	3	0.27	1.4	0.9	2.3	101	140	48
KLDD001	137	140	3	0.04	1.1	0.7	1.8	62	107	40

Hole	From (m)	To (m)	Interval (m)	Au (g/t)	Pt (ppb)	Pd (ppb)	Pt + Pd (ppb)	Cu (ppm)	Ni (ppm)	Co (ppm)
KLDD001	140	143	3	0.036	1.5	1.2	2.7	82	148	46
KLDD001	143	146	3	0.012	1.3	1	2.3	92	138	49
KLDD001	146	149	3	0.015	1.4	1.2	2.6	95	160	51
KLDD001	149	152	3	0.041	1.1	0.9	2	81	117	39
KLDD001	152	155	3	0.046	1.2	0.9	2.1	97	113	40
KLDD001	155	158	3	0.088	1.3	1	2.3	119	134	46
KLDD001	158	159.71	1.71	0.006	1.2	0.9	2.1	64	128	46
KLDD001	159.71	160.14	0.43	0.003	<0.5	<0.5	<0.5	7	13	5
KLDD001	160.14	163.55	3.41	0.011	1.1	0.8	1.9	79	114	42
KLDD001	163.55	166	2.45	0.002	<0.5	<0.5	<0.5	11	6	3
KLDD001	166	167.3	1.3	0.001	<0.5	<0.5	<0.5	3	8	4
KLDD001	167.3	170	2.7	0.004	1.4	1	2.4	89	140	47
KLDD001	170	173	3	0.003	5.4	1.8	7.2	76	163	48
KLDD001	173	176	3	0.007	1.8	1.4	3.2	87	198	50
KLDD001	176	179	3	0.008	0.8	0.6	1.4	64	89	30
KLDD001	179	181	2	0.008	1.6	1.3	2.9	97	192	49
KLDD001	181	183.35	2.35	0.011	1.4	1.1	2.5	90	133	45
KLDD001	183.35	186.35	3	<0.001	<0.5	<0.5	<0.5	2	6	2
KLDD001	186.35	189	2.65	0.011	1.7	1.2	2.9	88	171	49
KLDD001	189	192	3	0.011	1.4	1	2.4	84	130	45
KLDD001	192	194.64	2.64	0.014	1.1	0.8	1.9	104	125	46
KLDD001	194.64	196.63	1.99	0.003	<0.5	<0.5	<0.5	6	6	2
KLDD001	196.63	198.66	2.03	0.038	1.2	0.9	2.1	121	136	47
KLDD001	198.66	200.46	1.8	0.037	1.4	1	2.4	102	128	45
KLDD001	200.46	203	2.54	0.002	<0.5	<0.5	<0.5	4	4	2
KLDD001	203	206	3	0.001	<0.5	1.3	1.3	2	3	<1
KLDD001	206	209	3	<0.001	0.8	<0.5	0.8	1	3	1
KLDD001	209	212	3	<0.001	<0.5	<0.5	<0.5	6	5	4
KLDD001	212	214.43	2.43	0.002	1	1.2	2.2	33	54	19
KLDD001	214.43	217	2.57	0.03	3	3.8	6.8	132	198	50
KLDD001	217	220	3	0.021	1.4	0.9	2.3	88	134	47
KLDD001	220	222	2	0.004	1.3	0.9	2.2	76	131	48
KLDD001	222	224.73	2.73	0.048	1.2	0.9	2.1	83	125	43
KLDD001	224.73	226.35	1.62	0.018	0.7	0.6	1.3	89	81	22
KLDD001	226.65	229.21	2.56	0.05	1.4	0.9	2.3	125	134	40
KLDD001	229.21	230.18	0.97	0.15	1.8	1.5	3.3	196	185	51
KLDD001	230.18	231.1	0.92	0.057	0.6	<0.5	0.6	30	49	19
KLDD001	231.1	234	2.9	0.023	2.3	1.7	4	70	228	47
KLDD001	234	236	2	0.075	1.5	1	2.5	95	141	47
KLDD001	236	238.25	2.25	0.057	1.7	1.3	3	148	155	52
KLDD001	238.25	241	2.75	0.024	2.9	3.7	6.6	90	163	47
KLDD001	241	244	3	0.038	3.4	4.3	7.7	118	171	46
KLDD001	244	247	3	0.01	3	4	7	73	163	45
KLDD001	247	250	3	0.061	2.9	3.7	6.6	71	156	41
KLDD001	250	253	3	0.016	3.4	4.3	7.7	105	181	47
KLDD001	253	256	3	0.605	2.7	3.4	6.1	99	179	46
KLDD001	256	259	3	0.082	2.9	3.7	6.6	77	157	42

Hole	From (m)	To (m)	Interval (m)	Au (g/t)	Pt (ppb)	Pd (ppb)	Pt + Pd (ppb)	Cu (ppm)	Ni (ppm)	Co (ppm)
KLDD001	259	260.85	1.85	0.052	4	4.9	8.9	92	205	49
KLDD001	260.85	261.88	1.03	0.034	1.4	1.7	3.1	72	87	24
KLDD001	261.88	265	3.12	0.123	2.1	2.2	4.3	120	148	46
KLDD001	265	268	3	0.018	1.7	1.6	3.3	109	137	46
KLDD001	268	271	3	0.157	3.5	4.6	8.1	132	204	50
KLDD001	271	273.32	2.32	0.01	2.5	2.9	5.4	98	140	40
KLDD001	273.32	276	2.68	0.018	1.7	1.5	3.2	118	147	46
KLDD001	276	279	3	0.013	1.8	1.7	3.5	114	131	42
KLDD001	279	282	3	0.005	3.4	4.5	7.9	74	171	49
KLDD001	282	285	3	0.018	3.5	4.5	8	64	178	47
KLDD001	285	288	3	0.068	2.9	3.6	6.5	135	149	43
KLDD001	288	291	3	0.067	2.8	3.1	5.9	134	166	45
KLDD001	291	294	3	0.054	2.4	2.6	5	140	160	49
KLDD001	294	297	3	0.045	1.3	0.9	2.2	111	130	43
KLDD001	297	300	3	0.019	1.1	0.7	1.8	101	116	41
KLDD001	300	303	3	0.017	1.8	1.7	3.5	81	135	43
KLDD001	303	306	3	0.058	2.4	2.5	4.9	106	150	45
KLDD001	306	309	3	0.017	3.4	4.1	7.5	79	164	44
KLDD001	309	312	3	0.011	3	4.1	7.1	83	163	42
KLDD001	312	314.45	2.45	0.106	2.5	2.9	5.4	137	160	47
KLDD001	314.45	316.7	2.25	0.134	1.3	1.6	2.9	103	95	36
KLDD001	316.7	320	3.3	0.138	2.3	2.3	4.6	109	155	47
KLDD001	320	322.8	2.8	0.078	1.9	1.6	3.5	122	144	47
KLDD001	322.8	323.57	0.77	0.011	<0.5	<0.5	<0.5	75	30	17
KLDD001	323.57	326	2.43	0.052	2.5	2.7	5.2	129	167	45
KLDD001	326	329	3	0.038	1.8	1.4	3.2	92	133	45
KLDD001	329	332	3	0.14	1.4	1.1	2.5	95	124	41
KLDD001	332	335	3	0.027	2.8	2.3	5.1	83	318	53
KLDD001	335	338	3	0.046	4.2	3.7	7.9	127	158	53
KLDD001	338	341	3	0.103	3.8	4.1	7.9	105	172	52
KLDD001	341	344	3	3.37	3	3.7	6.7	120	170	48
KLDD001	344	347	3	0.117	2.3	1.9	4.2	105	210	50
KLDD001	347	350	3	0.036	3.3	4.1	7.4	91	163	44
KLDD001	350	353	3	0.026	3.4	4.4	7.8	86	173	47
KLDD001	353	356	3	0.007	3.1	3.7	6.8	68	152	45
KLDD001	356	359	3	0.024	3.2	3	6.2	86	141	47
KLDD001	359	361.75	2.75	0.031	5.1	5.2	10.3	84	144	50
KLDD001	361.75	363.02	1.27	0.007	5.4	5.4	10.8	36	133	37
KLDD001	363.02	366	2.98	<0.001	<0.5	<0.5	<0.5	8	15	4
KLDD001	366	367	1	<0.001	<0.5	<0.5	<0.5	2	5	2
KLDD001	367	370	3	<0.001	1.6	1.4	3	3	21	10
KLDD001	370	373	3	<0.001	<0.5	<0.5	<0.5	23	24	8
KLDD001	373	376	3	<0.001	<0.5	<0.5	<0.5	1	8	5
KLDD001	376	379	3	<0.001	<0.5	<0.5	<0.5	10	9	5
KLDD001	379	382	3	<0.001	<0.5	<0.5	<0.5	15	18	9
KLDD001	382	385	3	<0.001	<0.5	<0.5	<0.5	9	14	7
KLDD001	385	388	3	<0.001	<0.5	<0.5	<0.5	9	11	6

Hole	From (m)	To (m)	Interval (m)	Au (g/t)	Pt (ppb)	Pd (ppb)	Pt + Pd (ppb)	Cu (ppm)	Ni (ppm)	Co (ppm)
KLDD001	388	390.1	2.1	<0.001	<0.5	<0.5	<0.5	10	13	6
KLDD002	0	2.9	2.9	0.005	0.6	0.7	1.3	15	6	2
KLDD002	2.9	4.5	1.6	0.005	<0.5	<0.5	<0.5	6	4	1
KLDD002	4.5	6	1.5	0.005	<0.5	<0.5	<0.5	4	3	<1
KLDD002	6	7.7	1.7	0.001	<0.5	<0.5	<0.5	4	4	1
KLDD002	7.7	12.3	4.6	<0.001	<0.5	<0.5	<0.5	4	4	<1
KLDD002	12.3	13.8	1.5	0.001	<0.5	<0.5	<0.5	3	3	<1
KLDD002	13.8	15.3	1.5	0.002	<0.5	<0.5	<0.5	4	5	<1
KLDD002	15.3	16.8	1.5	0.002	<0.5	<0.5	<0.5	4	6	1
KLDD002	16.8	19	2.2	0.001	<0.5	<0.5	<0.5	5	6	1
KLDD002	19	21	2	0.002	<0.5	<0.5	<0.5	4	5	<1
KLDD002	21	23	2	0.002	3.4	1.6	5	3	3	<1
KLDD002	23	25	2	0.003	<0.5	<0.5	<0.5	4	2	<1
KLDD002	25	27	2	0.003	<0.5	<0.5	<0.5	3	2	<1
KLDD002	27	29	2	<0.001	<0.5	<0.5	<0.5	4	4	<1
KLDD002	29	31	2	<0.001	<0.5	<0.5	<0.5	3	4	<1
KLDD002	31	33	2	0.003	<0.5	<0.5	<0.5	4	3	<1
KLDD002	33	35	2	<0.001	<0.5	<0.5	<0.5	3	3	<1
KLDD002	35	37	2	0.002	<0.5	<0.5	<0.5	9	7	4
KLDD002	37	40	3	<0.001	<0.5	<0.5	<0.5	3	4	1
KLDD002	40	42	2	<0.001	<0.5	<0.5	<0.5	3	2	<1
KLDD002	42	44	2	<0.001	<0.5	<0.5	<0.5	4	3	<1
KLDD002	44	46	2	<0.001	<0.5	<0.5	<0.5	4	2	1
KLDD002	46	48	2	<0.001	<0.5	<0.5	<0.5	3	3	1
KLDD002	48	50	2	<0.001	<0.5	<0.5	<0.5	3	3	1
KLDD002	50	52	2	<0.001	<0.5	<0.5	<0.5	3	3	1
KLDD002	52	54	2	0.008	<0.5	<0.5	<0.5	3	2	1
KLDD002	54	56	2	0.006	<0.5	<0.5	<0.5	3	2	<1
KLDD002	56	58	2	0.001	<0.5	<0.5	<0.5	4	2	<1
KLDD002	58	60	2	0.001	<0.5	<0.5	<0.5	4	3	<1
KLDD002	60	62	2	<0.001	<0.5	<0.5	<0.5	4	3	<1
KLDD002	62	64	2	0.002	<0.5	<0.5	<0.5	5	5	2
KLDD002	64	66	2	<0.001	<0.5	<0.5	<0.5	2	3	<1
KLDD002	66	68	2	<0.001	<0.5	<0.5	<0.5	4	3	<1
KLDD002	68	70	2	<0.001	<0.5	<0.5	<0.5	3	3	<1
KLDD002	70	72	2	<0.001	<0.5	<0.5	<0.5	3	3	<1
KLDD002	72	74	2	<0.001	<0.5	<0.5	<0.5	2	3	<1
KLDD002	74	76	2	<0.001	<0.5	<0.5	<0.5	2	3	<1
KLDD002	76	78	2	0.001	<0.5	<0.5	<0.5	7	4	2
KLDD002	78	80	2	<0.001	<0.5	<0.5	<0.5	5	3	<1
KLDD002	80	82	2	0.001	<0.5	<0.5	<0.5	6	3	2
KLDD002	82	84	2	<0.001	<0.5	<0.5	<0.5	4	2	<1
KLDD002	84	86	2	<0.001	2	2.1	4.1	28	10	7
KLDD002	86	88	2	0.004	15.5	18.9	34.4	215	59	46
KLDD002	88	90	2	0.005	14.4	16.1	30.5	238	55	47
KLDD002	90	92	2	0.005	17.1	20.9	38	229	61	48
KLDD002	92	93.8	1.8	0.006	17.7	22.3	40	229	62	47

Hole	From (m)	To (m)	Interval (m)	Au (g/t)	Pt (ppb)	Pd (ppb)	Pt + Pd (ppb)	Cu (ppm)	Ni (ppm)	Co (ppm)
KLDD002	93.8	96	2.2	<0.001	1.1	1.2	2.3	15	6	4
KLDD002	96	98	2	<0.001	<0.5	<0.5	<0.5	5	3	<1
KLDD002	98	100	2	<0.001	<0.5	<0.5	<0.5	3	3	<1
KLDD002	100	102	2	<0.001	<0.5	<0.5	<0.5	3	2	<1
KLDD002	102	104	2	<0.001	<0.5	<0.5	<0.5	4	2	<1
KLDD002	104	106	2	<0.001	<0.5	<0.5	<0.5	4	3	<1
KLDD002	106	108	2	0.001	<0.5	<0.5	<0.5	4	3	1
KLDD002	108	109.3	1.3	<0.001	<0.5	<0.5	<0.5	5	3	<1
KLDD002	109.3	110.53	1.23	0.003	<0.5	<0.5	<0.5	7	6	1
KLDD002	110.53	112	1.47	0.072	1.3	0.8	2.1	150	123	46
KLDD002	112	113.4	1.4	0.075	1.4	1	2.4	119	152	47
KLDD002	113.4	116	2.6	0.264	2.2	1.9	4.1	103	223	46
KLDD002	116	119	3	0.022	1.1	0.8	1.9	176	99	38
KLDD002	119	122	3	0.092	1.3	0.9	2.2	114	129	45
KLDD002	122	125	3	0.005	1.5	1	2.5	106	148	46
KLDD002	125	128	3	0.012	1.6	1.1	2.7	99	168	48
KLDD002	128	131	3	0.011	1.6	1.2	2.8	132	162	51
KLDD002	131	134	3	0.029	1.6	1.2	2.8	143	154	47
KLDD002	134	137	3	0.01	2.6	2.2	4.8	125	265	53
KLDD002	137	140	3	0.01	1.5	1	2.5	127	143	48
KLDD002	140	143	3	0.013	1.4	0.9	2.3	98	134	48
KLDD002	143	144	1	0.027	1.3	0.9	2.2	222	137	53
KLDD002	144	145.9	1.9	0.009	1.2	0.7	1.9	100	128	46
KLDD002	145.9	146.53	0.63	0.007	0.7	0.5	1.2	45	138	35
KLDD002	146.53	149	2.47	0.005	1.2	0.8	2	92	126	45
KLDD002	149	151.37	2.37	0.002	1.2	0.8	2	113	123	47
KLDD002	151.37	155	3.63	0.005	1.2	0.8	2	102	134	46
KLDD002	155	158	3	0.007	1.1	0.8	1.9	98	123	44
KLDD002	158	161	3	0.035	1.2	0.8	2	113	123	44
KLDD002	161	164	3	0.155	1.6	1.2	2.8	134	175	48
KLDD002	164	167	3	0.014	1.6	1.2	2.8	136	162	50
KLDD002	167	170	3	0.007	1.4	1	2.4	69	150	46
KLDD002	170	173	3	0.01	1.2	0.7	1.9	87	130	44
KLDD002	173	176	3	0.016	1.6	1.1	2.7	101	155	47
KLDD002	176	179.56	3.56	0.012	1.4	0.9	2.3	116	136	47
KLDD002	179.56	180.4	0.84	<0.001	<0.5	<0.5	<0.5	19	9	8
KLDD002	180.4	182	1.6	0.016	1.3	0.9	2.2	89	139	48
KLDD002	182	185	3	0.008	2.9	3.5	6.4	103	175	45
KLDD002	185	188	3	0.003	2.9	3.9	6.8	97	184	50
KLDD002	188	191.1	3.1	0.009	3.1	4.2	7.3	130	223	54
KLDD002	191.1	193	1.9	0.014	2.9	4.4	7.3	176	176	49
KLDD002	193	195.76	2.76	0.036	3.1	4	7.1	198	186	51
KLDD002	195.76	196.4	0.64	0.021	2.7	3.9	6.6	506	178	56
KLDD002	196.4	199	2.6	0.113	2.5	3.7	6.2	493	175	52
KLDD002	199	202	3	0.003	3.1	4.2	7.3	86	213	52
KLDD002	202	205	3	0.007	2.8	3.4	6.2	105	171	47
KLDD002	205	208	3	0.009	3.1	3.7	6.8	107	168	49

Hole	From (m)	To (m)	Interval (m)	Au (g/t)	Pt (ppb)	Pd (ppb)	Pt + Pd (ppb)	Cu (ppm)	Ni (ppm)	Co (ppm)
KLDD002	208	211	3	0.011	3.2	3.8	7	100	232	54
KLDD002	211	214	3	0.001	2.9	3.7	6.6	79	165	49
KLDD002	214	217	3	0.009	2.6	3.6	6.2	88	167	43
KLDD002	217	220	3	0.004	3.1	4.2	7.3	119	191	50
KLDD002	220	223	3	0.007	3	4	7	81	184	51
KLDD002	223	224.45	1.45	0.002	2.8	3.9	6.7	92	179	49
KLDD002	224.45	226.51	2.06	0.001	0.6	0.8	1.4	23	43	12
KLDD002	226.51	230	3.49	0.003	2.1	2.6	4.7	61	143	35
KLDD002	230	233	3	0.009	2.2	3	5.2	87	117	35
KLDD002	233	234.45	1.45	0.013	2.8	3.7	6.5	207	176	47
KLDD002	234.45	235.35	0.9	0.003	1.8	2.5	4.3	238	123	36
KLDD002	235.35	236.6	1.25	0.004	2.7	3.7	6.4	129	159	46
KLDD002	236.6	239	2.4	0.016	1.4	1.7	3.1	36	84	20
KLDD002	239	241.23	2.23	0.004	<0.5	<0.5	<0.5	5	5	2
KLDD002	241.23	243.6	2.37	0.032	<0.5	<0.5	<0.5	13	15	3
KLDD002	243.6	246	2.4	0.004	2.8	3.8	6.6	55	156	43
KLDD002	246	248.75	2.75	0.014	2.5	3.4	5.9	61	145	40
KLDD002	248.75	251.78	3.03	0.1	3	4	7	84	258	41
KLDD002	251.78	252.7	0.92	0.002	<0.5	<0.5	<0.5	8	12	4
KLDD002	252.7	254.78	2.08	<0.001	<0.5	<0.5	<0.5	<1	2	3
KLDD002	254.78	255.4	0.62	<0.001	<0.5	<0.5	<0.5	2	3	3
KLDD002	255.4	259.15	3.75	0.039	2.2	1.3	3.5	25	16	7
KLDD002	259.15	260.52	1.37	0.032	3	4	7	125	175	48
KLDD002	260.52	264	3.48	0.043	<0.5	<0.5	<0.5	<1	2	<1
KLDD002	264	266.93	2.93	0.063	<0.5	<0.5	<0.5	<1	2	<1
KLDD002	266.93	267.57	0.64	0.006	<0.5	<0.5	<0.5	47	20	8
KLDD002	267.57	270	2.43	0.043	3	4	7	44	155	47
KLDD002	270	272.3	2.3	0.011	3.1	4	7.1	88	160	47
KLDD002	272.3	274.3	2	0.001	<0.5	<0.5	<0.5	6	5	5
KLDD002	274.3	275	0.7	0.058	2.7	3.8	6.5	189	170	50
KLDD002	275	278.2	3.2	0.008	1.2	1.7	2.9	23	64	20
KLDD002	278.2	279.6	1.4	0.005	<0.5	<0.5	<0.5	31	13	6
KLDD002	279.6	280.68	1.08	0.011	2.7	1.7	4.4	8	6	2
KLDD002	280.68	283.18	2.5	0.009	<0.5	<0.5	<0.5	43	12	5
KLDD002	283.18	285	1.82	0.016	1	1.5	2.5	26	57	16
KLDD002	285	288	3	0.004	2.9	3.8	6.7	54	158	46
KLDD002	288	291	3	0.015	2.4	3.7	6.1	55	128	40
KLDD002	291	294	3	0.003	2.9	3.8	6.7	45	157	47
KLDD002	294	297	3	0.017	2.8	4.1	6.9	68	156	45
KLDD002	297	300	3	0.002	2.8	4.1	6.9	68	163	47
KLDD002	300	303.55	3.55	0.003	3	4	7	73	172	50
KLDD002	303.55	305.14	1.59	0.014	<0.5	<0.5	<0.5	2	7	3
KLDD002	305.14	307.86	2.72	0.007	1.8	2.3	4.1	30	93	27
KLDD002	307.86	311.47	3.61	0.001	2.5	3.6	6.1	32	136	41
KLDD002	311.47	315	3.53	0.004	<0.5	<0.5	<0.5	<1	2	<1
KLDD002	315	317.39	2.39	0.011	<0.5	<0.5	<0.5	37	6	3
KLDD002	317.39	320	2.61	0.003	3.1	4.4	7.5	65	163	48

Hole	From (m)	To (m)	Interval (m)	Au (g/t)	Pt (ppb)	Pd (ppb)	Pt + Pd (ppb)	Cu (ppm)	Ni (ppm)	Co (ppm)
KLDD002	320	323	3	0.002	3.1	4.4	7.5	74	168	47
KLDD002	323	326.21	3.21	0.03	2.8	3.9	6.7	68	150	45
KLDD002	326.21	328.77	2.56	0.007	1.8	0.9	2.7	2	5	2
KLDD002	328.77	331	2.23	0.003	3.3	4.5	7.8	86	165	49
KLDD002	331	333	2	0.003	3.6	4.7	8.3	94	171	50
KLDD002	333	334	1	0.003	3.1	4.2	7.3	107	168	50
KLDD002	334	337	3	0.001	3.3	4.4	7.7	76	167	50
KLDD002	337	338	1	0.003	3.3	4.5	7.8	82	170	50
KLDD002	338	339	1	0.006	3.1	4	7.1	71	156	47
KLDD002	339	340.43	1.43	0.004	3	4	7	64	161	48
KLDD002	340.43	342.76	2.33	<0.001	<0.5	<0.5	<0.5	3	6	2
KLDD002	342.76	346	3.24	0.002	2.5	3.3	5.8	69	165	48
KLDD002	346	347.15	1.15	0.002	2.3	2.5	4.8	82	152	49
KLDD002	347.15	348	0.85	0.018	<0.5	<0.5	<0.5	42	15	6
KLDD002	348	349	1	0.038	<0.5	<0.5	<0.5	57	11	6
KLDD002	349	352	3	0.067	<0.5	<0.5	<0.5	52	12	6
KLDD002	352	353.11	1.11	0.056	<0.5	<0.5	<0.5	78	16	9
KLDD002	353.11	354.81	1.7	0.006	2.8	3.6	6.4	57	156	44
KLDD002	354.81	357.78	2.97	0.024	<0.5	<0.5	<0.5	44	10	6
KLDD002	357.78	358.31	0.53	0.025	2.4	3.5	5.9	125	143	43
KLDD002	358.31	361	2.69	0.002	1.8	2.3	4.1	26	90	28
KLDD002	361	363	2	0.012	0.8	0.6	1.4	79	79	30
KLDD002	363	364	1	0.028	1.3	1	2.3	120	123	45
KLDD002	364	366.77	2.77	0.038	1.3	1	2.3	157	134	48
KLDD002	366.77	370	3.23	<0.001	<0.5	<0.5	<0.5	<1	2	<1
KLDD002	370	373	3	<0.001	<0.5	<0.5	<0.5	3	2	1
KLDD002	373	376	3	0.002	<0.5	<0.5	<0.5	2	5	5
KLDD002	376	377	1	<0.001	<0.5	0.5	<0.5	13	20	8
KLDD002	377	378.14	1.14	0.004	2.8	3.7	6.5	59	162	46
KLDD002	378.14	381	2.86	0.004	0.6	0.8	1.4	17	34	14
KLDD002	381	382	1	0.002	<0.5	<0.5	<0.5	9	13	6
KLDD002	382	383.36	1.36	0.032	1.6	1.3	2.9	152	175	50
KLDD002	383.36	386	2.64	0.001	<0.5	<0.5	<0.5	3	5	3
KLDD002	386	387.39	1.39	0.001	<0.5	<0.5	<0.5	8	8	6
KLDD002	387.39	390	2.61	0.004	3.1	4.1	7.2	73	178	44
KLDD002	390	393	3	0.003	0.9	1.1	2	24	52	15
KLDD002	393	396	3	0.01	<0.5	<0.5	<0.5	32	5	6
KLDD002	396	399	3	0.004	1.1	0.8	1.9	68	114	43
KLDD002	399	401.7	2.7	0.019	1.7	1.6	3.3	88	132	47
KLDD002	401.7	402.44	0.74	0.022	1.4	1.2	2.6	132	132	49
KLDD002	402.44	403.43	0.99	0.042	1.4	1.1	2.5	119	133	50
KLDD002	403.43	404	0.57	0.495	2.1	2.2	4.3	312	148	59
KLDD002	404	407.13	3.13	0.066	1.6	1.2	2.8	91	159	48
KLDD002	407.13	410	2.87	0.009	<0.5	<0.5	<0.5	25	22	11
KLDD002	410	412.79	2.79	0.096	1	0.8	1.8	109	112	36
KLDD002	412.79	413.39	0.6	0.566	2	2	4	211	221	52
KLDD002	413.39	413.61	0.22	0.094	<0.5	<0.5	<0.5	22	21	7

Hole	From (m)	To (m)	Interval (m)	Au (g/t)	Pt (ppb)	Pd (ppb)	Pt + Pd (ppb)	Cu (ppm)	Ni (ppm)	Co (ppm)
KLDD002	413.61	415	1.39	0.305	2.9	3.8	6.7	112	147	45
KLDD002	415	416	1	0.214	3	4	7	225	180	54
KLDD002	416	418.34	2.34	0.014	3.1	4	7.1	84	167	50
KLDD002	418.34	420	1.66	0.003	<0.5	<0.5	<0.5	12	12	10
KLDD002	420	423	3	0.011	1.1	0.8	1.9	93	125	44
KLDD002	423	424.37	1.37	0.02	1.7	1.4	3.1	101	185	51
KLDD002	424.37	428	3.63	0.031	2	2.6	4.6	94	136	42
KLDD002	428	431	3	0.023	3.1	4	7.1	90	176	48
KLDD002	431	432	1	0.004	2.7	3.5	6.2	63	160	48
KLDD003	2.7	3.7	1	0.017	2.4	3.8	6.2	71	49	7
KLDD003	3.7	7	3.3	0.013	1.5	4	5.5	15	25	4
KLDD003	7	10	3	0.003	1	2.7	3.7	17	16	2
KLDD003	10	16.7	6.7	0.016	0.8	2.5	3.3	35	12	2
KLDD003	16.7	20	3.3	0.016	<0.5	0.9	0.9	24	7	2
KLDD003	20	24	4	0.006	<0.5	1.4	1.4	29	10	2
KLDD003	24	28	4	0.08	3.5	5.9	9.4	57	81	30
KLDD003	28	32	4	0.093	3.9	7	10.9	100	123	51
KLDD003	32	35	3	0.022	3.3	9	12.3	102	118	47
KLDD003	35	38	3	0.023	4	19.7	23.7	246	164	50
KLDD003	38	41	3	0.005	4.1	20.3	24.4	272	163	52
KLDD003	41	44	3	0.006	4.3	17.3	21.6	244	156	53
KLDD003	44	47	3	0.009	3.6	11.2	14.8	208	154	53
KLDD003	47	50	3	0.004	3.9	11.2	15.1	226	147	50
KLDD003	50	52	2	0.004	3.2	15.4	18.6	289	138	47
KLDD003	52	54	2	0.004	4	19.4	23.4	278	128	49
KLDD003	54	56	2	0.004	4.7	18.9	23.6	248	139	53
KLDD003	56	58	2	0.004	4.7	18.6	23.3	239	142	55
KLDD003	58	60	2	0.004	4.3	18.9	23.2	245	137	51
KLDD003	60	62	2	0.003	4.3	18.3	22.6	260	138	54
KLDD003	62	64	2	0.003	4.3	18.1	22.4	262	136	54
KLDD003	64	66	2	0.003	4.6	18.9	23.5	239	140	53
KLDD003	66	68	2	0.003	4.1	18.1	22.2	237	139	53
KLDD003	68	70	2	0.003	4.2	18.8	23	268	138	53
KLDD003	70	72	2	0.003	4.4	18.9	23.3	259	139	54
KLDD003	72	74	2	0.003	4.2	18.2	22.4	254	134	52
KLDD003	74	76	2	0.003	4.1	18.3	22.4	254	135	53
KLDD003	76	78	2	0.004	4.8	19.4	24.2	246	135	53
KLDD003	78	79.74	1.74	0.007	3.5	10.7	14.2	279	153	53
KLDD003	79.74	82	2.26	0.001	<0.5	<0.5	<0.5	30	17	7
KLDD003	82	84	2	0.006	<0.5	<0.5	<0.5	41	5	4
KLDD003	84	86.02	2.02	0.003	<0.5	<0.5	<0.5	69	20	10
KLDD003	86.02	88	1.98	<0.001	2.7	2.4	5.1	38	140	49
KLDD003	88	90	2	0.003	2.7	2.5	5.2	35	129	49
KLDD003	90	92	2	0.002	4.2	3.5	7.7	75	206	55
KLDD003	92	94	2	0.001	3.1	2.6	5.7	57	151	50
KLDD003	94	96	2	0.002	2.1	1.9	4	52	100	48
KLDD003	96	98	2	0.002	3.8	3.8	7.6	120	214	64

Hole	From (m)	To (m)	Interval (m)	Au (g/t)	Pt (ppb)	Pd (ppb)	Pt + Pd (ppb)	Cu (ppm)	Ni (ppm)	Co (ppm)
KLDD003	98	100	2	0.003	5.6	5.2	10.8	108	253	58
KLDD003	100	102	2	0.006	14.5	15.7	30.2	27	281	59
KLDD003	102	104	2	0.014	18.4	19.7	38.1	32	383	72
KLDD003	104	106	2	0.004	9.6	8.7	18.3	68	147	50
KLDD003	106	107.17	1.17	0.005	9.3	7	16.3	48	155	56
KLDD003	107.17	109	1.83	<0.001	<0.5	<0.5	<0.5	32	6	4
KLDD003	109	111	2	0.001	<0.5	<0.5	<0.5	23	4	3
KLDD003	111	113	2	<0.001	<0.5	<0.5	<0.5	31	3	2
KLDD003	113	115	2	0.001	<0.5	<0.5	<0.5	24	7	3
KLDD003	115	117	2	0.023	4	3.2	7.2	34	61	27
KLDD003	117	119	2	0.005	3.1	2.7	5.8	21	46	20
KLDD003	119	121	2	0.006	<0.5	<0.5	<0.5	20	7	5
KLDD003	121	123	2	0.013	<0.5	<0.5	<0.5	11	9	5
KLDD003	123	125	2	0.027	<0.5	<0.5	<0.5	17	5	4
KLDD003	125	127	2	0.002	<0.5	<0.5	<0.5	10	4	3
KLDD003	127	129	2	0.008	1.4	1.8	3.2	76	86	22
KLDD003	129	131	2	0.001	3.2	4	7.2	70	186	48
KLDD003	131	133.75	2.75	0.002	3	3.9	6.9	87	206	48
KLDD003	133.75	135.75	2	0.005	<0.5	<0.5	<0.5	13	9	3
KLDD003	135.75	138	2.25	0.006	2.4	3.5	5.9	66	142	41
KLDD003	138	140	2	0.017	2.7	3.8	6.5	51	153	42
KLDD003	140	142	2	0.026	2.8	3.6	6.4	50	150	41
KLDD003	142	144	2	0.01	2.5	3.4	5.9	57	137	39
KLDD003	144	146	2	0.006	2.8	3.5	6.3	60	162	41
KLDD003	146	148	2	0.009	2.3	3.1	5.4	165	153	39
KLDD003	148	150	2	0.002	2.6	3.6	6.2	63	159	43
KLDD003	150	152	2	0.003	2.9	3.8	6.7	59	182	48
KLDD003	152	154	2	0.002	2.3	3.1	5.4	46	124	36
KLDD003	154	156	2	0.004	2.6	3.5	6.1	54	170	46
KLDD003	156	158	2	0.06	3.1	3.9	7	92	185	50
KLDD003	158	160	2	0.022	2.7	3.6	6.3	50	155	43
KLDD003	160	162	2	0.006	2.1	2.5	4.6	54	168	43
KLDD003	162	164	2	0.015	2	2.8	4.8	73	125	36
KLDD003	164	166.69	2.69	0.02	2.4	3.2	5.6	51	133	40
KLDD003	166.69	169.12	2.43	0.015	<0.5	<0.5	<0.5	31	28	12
KLDD003	169.12	172	2.88	0.016	2.7	3.4	6.1	68	177	45
KLDD003	172	175	3	0.009	2.8	3.4	6.2	71	174	49
KLDD003	175	177.06	2.06	0.005	3.1	3.9	7	65	193	51
KLDD003	177.06	180	2.94	0.016	<0.5	<0.5	<0.5	59	15	7
KLDD003	180	183	3	0.034	<0.5	<0.5	<0.5	55	13	6
KLDD003	183	184.67	1.67	0.013	<0.5	<0.5	<0.5	57	17	7
KLDD003	184.67	188	3.33	0.007	3	3.7	6.7	60	179	45
KLDD003	188	191	3	0.012	2.7	3.3	6	47	155	41
KLDD003	191	194	3	0.175	2.8	3.7	6.5	87	153	42
KLDD003	194	195.1	1.1	0.307	2.5	3.2	5.7	82	142	40
KLDD003	195.1	196.23	1.13	0.034	<0.5	<0.5	<0.5	17	23	8
KLDD003	196.23	199	2.77	0.046	1.3	1	2.3	107	133	44

Hole	From (m)	To (m)	Interval (m)	Au (g/t)	Pt (ppb)	Pd (ppb)	Pt + Pd (ppb)	Cu (ppm)	Ni (ppm)	Co (ppm)
KLDD003	199	202	3	0.037	1.6	1.1	2.7	84	154	44
KLDD003	202	205	3	0.062	1.5	1.1	2.6	88	163	52
KLDD003	205	206.72	1.72	0.012	1.5	1.1	2.6	69	153	50
KLDD003	206.72	207.17	0.45	0.089	2.4	2.3	4.7	266	232	65
KLDD003	207.17	208	0.83	0.019	1.2	0.8	2	95	144	50
KLDD003	208	209.79	1.79	0.019	1.2	0.8	2	54	137	47
KLDD003	209.79	211.05	1.26	0.026	<0.5	<0.5	<0.5	55	69	16
KLDD003	211.05	214	2.95	0.009	2.7	3.5	6.2	61	183	47
KLDD003	214	217	3	0.006	3.5	4.6	8.1	99	213	47
KLDD003	217	220	3	0.005	3.8	4.8	8.6	100	232	49
KLDD003	220	221.54	1.54	0.01	3.4	4.4	7.8	91	196	43
KLDD003	221.54	224.74	3.2	0.062	<0.5	<0.5	<0.5	17	11	6
KLDD003	224.74	228	3.26	0.004	1.7	2	3.7	56	127	37
KLDD003	228	231	3	0.011	1.3	0.9	2.2	77	129	40
KLDD003	231	232	1	0.053	1	0.8	1.8	364	121	44
KLDD003	232	235	3	0.031	1.3	0.9	2.2	79	127	45
KLDD003	235	238	3	0.172	1.3	1	2.3	122	127	45
KLDD003	238	241	3	0.094	1.4	1	2.4	112	128	46
KLDD003	241	242	1	0.005	1.4	1.1	2.5	81	156	48
KLDD003	242	243	1	0.003	1.2	1.1	2.3	71	136	48
KLDD003	243	246	3	0.003	1.5	1.1	2.6	114	154	51
KLDD003	246	249	3	0.017	1.3	1.1	2.4	93	153	43
KLDD003	249	251	2	0.007	2.4	2.2	4.6	94	164	49
KLDD003	251	252.47	1.47	0.003	1.5	1.2	2.7	94	161	48
KLDD003	252.47	253.43	0.96	0.055	2	1.4	3.4	434	211	53
KLDD003	253.43	256	2.57	0.007	1.6	1.1	2.7	75	155	47
KLDD003	256	259	3	0.004	1.4	1.1	2.5	108	149	49
KLDD003	259	262	3	0.003	1.3	1	2.3	139	127	40
KLDD003	262	265	3	0.003	1.8	1.5	3.3	83	187	49
KLDD003	265	268	3	0.003	1.3	0.9	2.2	101	133	44
KLDD003	268	271	3	0.013	1.9	1.6	3.5	102	192	51
KLDD003	271	274	3	0.006	1.5	1.1	2.6	70	146	47
KLDD003	274	277	3	0.016	1.2	0.9	2.1	142	117	41
KLDD003	277	280	3	0.014	1.9	2	3.9	100	134	40
KLDD003	280	283	3	0.008	3.4	4.8	8.2	77	173	45
KLDD003	283	287	4	0.011	3.7	4.9	8.6	106	195	50
KLDD003	287	290.36	3.36	0.014	3.4	4.4	7.8	94	177	44
KLDD003	290.36	293.55	3.19	0.229	<0.5	<0.5	<0.5	9	6	<1
KLDD003	293.55	297	3.45	0.009	3.4	4.7	8.1	87	186	45
KLDD003	297	300	3	0.012	4	5.1	9.1	90	228	49
KLDD003	300	303	3	0.007	3.8	4.9	8.7	109	228	51
KLDD003	303	306	3	0.015	3.9	4.9	8.8	98	222	50
KLDD003	306	309	3	0.01	3.2	4.3	7.5	92	170	45
KLDD003	309	312	3	0.015	3.3	4.3	7.6	80	201	42
KLDD003	312	315	3	0.011	1.8	2	3.8	88	134	39
KLDD003	315	318	3	0.031	1.7	1.3	3	111	145	48
KLDD003	318	321	3	0.017	1.7	1.2	2.9	112	142	45

Hole	From (m)	To (m)	Interval (m)	Au (g/t)	Pt (ppb)	Pd (ppb)	Pt + Pd (ppb)	Cu (ppm)	Ni (ppm)	Co (ppm)
KLDD003	321	324	3	0.009	2	1.6	3.6	98	195	46
KLDD003	324	327	3	0.006	1.6	1.1	2.7	93	151	46
KLDD003	327	329.1	2.1	0.02	1.6	2	3.6	124	118	40
KLDD003	329.1	330.89	1.79	0.026	<0.5	<0.5	<0.5	11	8	5
KLDD003	330.89	334	3.11	0.006	1.5	1	2.5	88	121	42
KLDD003	334	337	3	0.003	1.4	1	2.4	91	125	44
KLDD003	337	340	3	0.003	0.9	0.7	1.6	69	106	38
KLDD003	340	343	3	0.015	1.2	1	2.2	96	123	40
KLDD003	343	346	3	0.007	1.7	1.2	2.9	71	150	45
KLDD003	346	349	3	0.009	1.6	1.1	2.7	105	143	46
KLDD003	349	352	3	0.011	1.5	1.4	2.9	83	131	43
KLDD003	352	355	3	0.04	1.8	1.8	3.6	123	136	43
KLDD003	355	358	3	0.063	1.8	1.8	3.6	125	134	45
KLDD003	358	361	3	0.066	3	3.5	6.5	139	178	46
KLDD003	361	364	3	0.037	1.5	1.3	2.8	98	127	42
KLDD003	364	367	3	0.023	1.4	1.4	2.8	72	115	34
KLDD003	367	370	3	0.009	2.1	1.6	3.7	81	195	45
KLDD003	370	373	3	0.022	1.5	1.2	2.7	134	140	42
KLDD003	373	376	3	0.015	1.5	1.2	2.7	133	150	45
KLDD003	376	379	3	0.035	1.4	1	2.4	132	116	39
KLDD003	379	382	3	0.011	1.4	1.2	2.6	96	136	43
KLDD003	382	385	3	0.008	1.4	1	2.4	107	128	44
KLDD003	385	388	3	0.017	1.3	1	2.3	120	119	42
KLDD003	388	391	3	0.01	1.3	1.1	2.4	76	126	43
KLDD003	391	394	3	0.017	2.7	3.4	6.1	89	164	41
KLDD003	394	397	3	0.008	3.7	4.9	8.6	105	191	49
KLDD003	397	400	3	0.021	3.1	3.9	7	87	167	45
KLDD003	400	403	3	0.09	1.5	1.2	2.7	162	159	47
KLDD003	403	406	3	0.04	1.5	1.3	2.8	138	131	43
KLDD003	406	409	3	0.037	1.4	1	2.4	95	123	44
KLDD003	409	412	3	0.029	1.3	1.2	2.5	97	137	46
KLDD003	412	415	3	0.038	2.3	2.8	5.1	119	140	40
KLDD003	415	418	3	0.03	3.3	4.4	7.7	85	163	45
KLDD003	418	421	3	0.036	3.3	4.3	7.6	88	200	47
KLDD003	421	424	3	0.044	1.5	1.2	2.7	99	128	46
KLDD003	424	427	3	0.19	1.3	1	2.3	130	119	43
KLDD003	427	430	3	0.043	1.5	1	2.5	91	130	45
KLDD003	430	433	3	0.008	1.3	1	2.3	118	130	45
KLDD003	433	436	3	0.012	1.4	1.1	2.5	135	133	46
KLDD003	436	439	3	0.115	1.5	1.1	2.6	194	137	46
KLDD003	439	442	3	0.042	1.4	1.1	2.5	121	134	48
KLDD003	442	445	3	0.07	1.3	1	2.3	157	130	46
KLDD003	445	448	3	0.041	3.1	4.2	7.3	101	164	47
KLDD003	448	451	3	0.021	3.2	4	7.2	87	170	46
KLDD003	451	454	3	0.01	3.5	4.4	7.9	97	168	49
KLDD003	454	457	3	0.021	2.7	3.3	6	84	153	43
KLDD003	457	460	3	0.054	1.4	1.1	2.5	83	130	45

Hole	From (m)	To (m)	Interval (m)	Au (g/t)	Pt (ppb)	Pd (ppb)	Pt + Pd (ppb)	Cu (ppm)	Ni (ppm)	Co (ppm)
KLDD003	460	463	3	0.042	1.5	1.1	2.6	70	130	43
KLDD003	463	466	3	0.085	1.7	1.2	2.9	82	135	46
KLDD003	466	469	3	0.013	1.8	1.4	3.2	96	168	49
KLDD003	469	472	3	0.025	2.7	3.4	6.1	85	162	44
KLDD003	472	475	3	0.012	3.6	4.8	8.4	90	201	48
KLDD003	475	478	3	0.015	3.9	5.1	9	96	186	48
KLDD003	478	481	3	0.017	5.7	5.6	11.3	95	193	46
KLDD003	481	483	2	0.017	8.5	9.1	17.6	91	186	51
KLDD003	483	484.67	1.67	0.029	4.1	3.6	7.7	105	150	49
KLDD003	484.67	487	2.33	0.005	10.5	11.5	22	195	76	49
KLDD003	487	488.9	1.9	0.005	10.2	12.1	22.3	182	72	47

Yours sincerely



Andrew Radonjic
Managing Director

The information in this report that relates to Exploration Results, Exploration Targets and Minerals Resources is based on information compiled by Mr Andrew Radonjic, a fulltime employee of the company and who is a Member of The Australasian Institute of Mining and Metallurgy. Mr Andrew Radonjic has sufficient experience which is relevant to the style of mineralisation and type of deposits under consideration and to the activity which he is undertaking to qualify as a Competent Person as defined in the 2012 Edition of the 'Australasian Code for Reporting of Exploration Results, Mineral Resources and Ore Reserves'. Mr Andrew Radonjic consents to the inclusion in the report of the matters based on his information in the form and context in which it appears.

Footnotes:

- Figure 3 in Ausgold Limited ASX Announcement 1 November 2019 "Scoping Study shows potential for a new gold mine at Katanning".
- Aurum Analytics, Australian & New Zealand Gold Operations December Quarter 2019 - Final Report.
- Endowment figure combining production up to 30th June 2019 sourced from www.rameliusresources.com.au, Catalpa Resources Annual Reports, Evolution Mining Annual Reports, and Ramelius Resources Annual Reports and resources are as stated in the Ramelius Resources Annual Report 2019.
- Ausgold Limited ASX Announcement 1 November 2019 "Scoping Study shows potential for a new gold mine at Katanning".
- Explaurum Limited ASX Announcement 30 May 2018 "Tampia Feasibility Confirms Robust High-Margin Gold Project".
- Maxlow, J., 1990, Griffin's Find Gold Deposit, Lake Grace in Geology of the Mineral Deposits of Australia and Papua New Guinea, Melbourne, Australia, The Australasian Institute of Mining and Metallurgy, p. 171-175.

Appendix One

JORC Code, 2012 Edition | 'Table 1' Report

Section 1 Sampling Techniques and Data

(Criteria in this section apply to all succeeding sections)

Criteria	JORC Code explanation	Commentary
Sampling techniques	<ul style="list-style-type: none"> Nature and quality of sampling (e.g.: cut channels, random chips, or specific specialised industry standard measurement tools appropriate to the minerals under investigation, such as down hole gamma sondes, or handheld XRF instruments, etc.). These examples should not be taken as limiting the broad meaning of sampling. Measures taken to ensure sample representivity and the appropriate calibration of any measurement tools or systems used. Aspects of the determination of mineralisation that are Material to the Public Report. In cases where 'industry standard' work has been done this would be relatively simple (e.g.: 'reverse circulation drilling was used to obtain 1 m samples from which 3 kg was pulverised to produce a 30 g charge for fire assay'). In other cases more explanation may be required, such as where there is coarse gold that has inherent sampling problems. Unusual commodities or mineralisation types (e.g.: submarine nodules) may warrant disclosure of detailed information. 	<ul style="list-style-type: none"> Assay results for Venture Minerals' (Venture) three diamond drill core holes KLDD001, 2 and 3 for 1311 m are being reported here. The diamond drill core samples were collected, logged and sampled in an industry standard manner by suitably qualified Venture geologists. Some 1,308 m of drill core was cut in quarter for assay. Sample lengths ranged from 0.2 m to 6.7 m with an average of 2.4 m, sample weights ranged from c. 0.3 to 13 kg. Results for 4 historic Rotary Air Blast ("RAB") holes for 73 m drilled by S&D Treloar in 2009 are being reported here. Some 70 m of RAB drilling was sampled and assays of elements of interest are reported. There is insufficient information to verify the supervision, logging and sampling methodologies but standard industry practices of the day are assumed. The results of some 424 laterite samples collected by Venture and 363 historic laterite samples collected by Troy Resources (Troy) were used to define the mafic-ultramafic intrusive complexes identified in this report. Venture's laterite samples were collected from the surface, typically weighed between 0.47 and 3.45 kg each, and were submitted to ALS Geochemistry, Perth for assay. Troy's laterite samples were collected from the surface and samples of c. 1 kg of <2mm fraction and were submitted to Genalysis, Perth for assay. For information regarding previously announced trenches and soil sampling, refer to ASX announcement 8 January 2021.
Drilling techniques	<ul style="list-style-type: none"> Drill type (e.g.: core, reverse circulation, open-hole hammer, rotary air blast, auger, Bangka, sonic, etc.) and details (e.g.: core diameter, triple or standard tube, depth of diamond tails, face-sampling bit or other type, whether core is oriented and if so, by what method, etc.). 	<ul style="list-style-type: none"> The diamond drilling was conducted for Venture Minerals by Terra Drilling Pty Ltd using a KW1600 truck mounted diamond coring rig. Drill core comprised HQ and NQ2 sizes. Drill core was routinely orientated by REFLEX ACTIII tool and structurally logged by suitably qualified Venture Minerals geologists. The historic RAB drilling was conducted by Treloar Drilling. There is insufficient information to verify the details of the drilling used for the historic drilling.
Drill sample recovery	<ul style="list-style-type: none"> Method of recording and assessing core and chip sample recoveries and results assessed. Measures taken to maximise sample recovery and ensure representative nature of the samples. Whether a relationship exists between sample recovery and grade and whether sample bias may have occurred due to preferential loss/gain of fine/coarse material. 	<ul style="list-style-type: none"> Drill core recovery was determined with tape measure and averaged >95%. There is no observed correlation between grade and recovery. Historic RAB drill sample recoveries are unknown.
Logging	<ul style="list-style-type: none"> Whether core and chip samples have been geologically and geotechnically logged to a level of detail to support appropriate Mineral Resource estimation, mining studies and metallurgical studies. Whether logging is qualitative or quantitative in nature. Core (or costean, channel, etc.) photography. The total length and percentage of the relevant intersections logged. 	<ul style="list-style-type: none"> All diamond drill samples were qualitatively geologically logged by a suitably qualified Venture geologist. There is insufficient information to verify whether the historic drilling was suitably logged but standard industry practices of the day could be assumed. Mineral resources have not been estimated and the current drilling data is not considered in any way adequate for resource estimation purposes. All laterite samples were qualitatively logged.

Criteria	JORC Code explanation	Commentary
		<ul style="list-style-type: none"> For information regarding previously announced trenches and soil sampling, refer to ASX announcement 8 January 2021.
Sub-sampling techniques and sample preparation	<ul style="list-style-type: none"> If core, whether cut or sawn and whether quarter, half or all core taken. If non-core, whether riffled, tube sampled, rotary split, etc. and whether sampled wet or dry. For all sample types, the nature, quality and appropriateness of the sample preparation technique. Quality control procedures adopted for all sub-sampling stages to maximise representivity of samples. Measures taken to ensure that the sampling is representative of the in situ material collected, including for instance results for field duplicate/second-half sampling. Whether sample sizes are appropriate to the grain size of the material being sampled. 	<ul style="list-style-type: none"> All Venture drill core was logged and sampling intervals determined by a suitably qualified geologist. Continuous quarter core samples were collected using a core saw in intervals ranging from 0.2 m to 6.7 m with an average of 2.4 m. Sample weights ranged from c. 0.3 to 13 kg. Duplicate quarter core samples were taken for approx 4% of the samples. Duplicates were collected in the same way as the primary core samples. Continuous quarter HQ and NQ core samples of average 2.4 m sample length are considered appropriate for this type of reconnaissance exploration drilling. There is insufficient information regarding the sampling techniques, sample sizes and QC for the historic RAB drilling. Venture's laterite samples were submitted to ALS Geochemistry, Perth where they were dried, crushed and pulverised to 85% passing 75 microns for assay. Troy's laterite samples were sieved to <2 mm then submitted to Genalysis, Perth for assay. For information regarding previously announced trenches and soil sampling, refer to ASX announcement 8 January 2021.
Quality of assay data and laboratory tests	<ul style="list-style-type: none"> The nature, quality and appropriateness of the assaying and laboratory procedures used and whether the technique is considered partial or total. For geophysical tools, spectrometers, handheld XRF instruments, etc., the parameters used in determining the analysis including instrument make and model, reading times, calibrations factors applied and their derivation, etc. Nature of quality control procedures adopted (eg standards, blanks, duplicates, external laboratory checks) and whether acceptable levels of accuracy (ie lack of bias) and precision have been established. 	<ul style="list-style-type: none"> Venture's drill core samples were prepared and assayed at Intertek Genalysis, Perth. Au, Pt and Pd were determined by industry standard 50g fire assay and ICP-MS finish. A multi-element suite including Ag, Cu, Pb, Zn, Ni and Co was determined by industry standard four acid digestion with ICP-OES finish. Commercially certified assay standards were included at a rate of c. one per 25 samples. All standards reported within 10% of the reference values for the reported elements in the range of interest. Quarter core duplicate results show no significant sampling error issues in the grade ranges of interest. Laboratory pulp repeats suggest some nuggety Au behaviour. Assaying of historic RAB drilling was conducted at Genalysis and Ultratrace. There is insufficient information to verify the analytical techniques and QC used but standard industry practices of the day could be assumed. Venture's laterite samples were assayed at ALS Geochemistry for a broad suite of elements including Cr by 4 acid digestion (including HF) with ICP-AES finish and Pt and Pd by 50 g lead collection fire assay with ICP-AES finish. Commercially certified reference materials were included in Venture's laterite sample submissions to ALS Geochemistry at a rate of at least one standard per 25 samples for the reported elements in the range of interest. Results for the commercial assay standards batches are within 13% of the reference values for Cr and within 15% of the reference values for Pt and Pd. The historic laterite samples were assayed at Genalysis for a small suite of elements including Cr by aqua regia digestion with graphite furnace AAS finish. It is not known what QC procedures were undertaken.

Criteria	JORC Code explanation	Commentary
		<ul style="list-style-type: none"> For information regarding previously announced trenches and soil sampling, refer to ASX announcement 8 January 2021.
Verification of sampling and assaying	<ul style="list-style-type: none"> The verification of significant intersections by either independent or alternative company personnel. The use of twinned holes. Documentation of primary data, data entry procedures, data verification, data storage (physical and electronic) protocols. Discuss any adjustment to assay data. 	<ul style="list-style-type: none"> The assay results in Venture's drilling are compatible with the observed mineralogy. The use of twinned holes is not applicable at this stage. There is no information on whether the historic RAB and laterite assay results are compatible with observed mineralogy and geology. Primary data is stored and documented in industry standard ways. Venture drilling and laterite assays are as reported by the assay laboratories and not been adjusted in any way. The historic RAB and laterite assay data is as reported by Treloar and Troy to WA DMIRS and available from DMIRS WAMEX open file reporting system and has not be adjusted in any way. Venture's remnant assay pulps are currently held in storage by Venture and by responsible assay laboratories. For information regarding previously announced trenches and soil sampling, refer to ASX announcement 8 January 2021.
Location of data points	<ul style="list-style-type: none"> Accuracy and quality of surveys used to locate drill holes (collar and down-hole surveys), trenches, mine workings and other locations used in Mineral Resource estimation. Specification of the grid system used. Quality and adequacy of topographic control. 	<ul style="list-style-type: none"> Diamond drill hole locations were determined by handheld GPS considered accurate to ± 5 m. All diamond holes were down hole surveyed by single shot camera (magnetic instrument) suitable for such reconnaissance exploration drilling. Significant drill hole deviation was not observed. Historic drill hole locations were determined by handheld GPS. There is no information on the accuracy of the locations of the historic drilling. Venture's laterite sample locations were determined by handheld GPS considered accurate to ± 5 m. The historic laterite sample locations were determined by handheld GPS. All co-ordinates were recorded in MGA Zone 50 GDA94. Topographic control from a Digital Terrain Model based on the 30 m Shuttle Radar Topographic Mission data. For information regarding previously announced trenches and soil sampling, refer to ASX announcement 8 January 2021.
Data spacing and distribution	<ul style="list-style-type: none"> Data spacing for reporting of Exploration Results. Whether the data spacing and distribution is sufficient to establish the degree of geological and grade continuity appropriate for the Mineral Resource and Ore Reserve estimation procedure(s) and classifications applied. Whether sample compositing has been applied. 	<ul style="list-style-type: none"> Venture and historic drill spacing is of reconnaissance nature and in no way sufficient to define Mineral Resources. Venture and historic laterite sampling is of reconnaissance nature and not conducted on a regular grid spacing. The laterite sampling is in no way sufficient to establish mineral resources. Sample compositing was not applied. For information regarding previously announced trenches and soil sampling, refer to ASX announcement 8 January 2021.
Orientation of data in relation to	<ul style="list-style-type: none"> Whether the orientation of sampling achieves unbiased sampling of possible structures and the 	<ul style="list-style-type: none"> Structural logging of orientated drill core shows KLDD001, 2 and 3 were drilled at a high angle to

Criteria	JORC Code explanation	Commentary
geological structure	<p>extent to which this is known, considering the deposit type.</p> <ul style="list-style-type: none"> If the relationship between the drilling orientation and the orientation of key mineralised structures is considered to have introduced a sampling bias, this should be assessed and reported if material. 	<p>the gneissic foliation, dominant vein orientations and known stratigraphy.</p> <ul style="list-style-type: none"> There is no information regarding how the historic RAB drilling relates to stratigraphic orientation. Venture and historic laterite sampling is of reconnaissance nature, not applicable. For information regarding previously announced trenches and soil sampling, refer to ASX announcement 8 January 2021.
Sample security	<ul style="list-style-type: none"> The measures taken to ensure sample security. 	<ul style="list-style-type: none"> The chain of custody from for Venture sampling and submission to the commercial assay laboratory was managed by Venture personnel and considered appropriate. The chain of custody for the historic drilling and laterite sampling is not known. For information regarding previously announced trenches and soil sampling, refer to ASX announcement 8 January 2021.
Audits or reviews	<ul style="list-style-type: none"> The results of any audits or reviews of sampling techniques and data. 	<ul style="list-style-type: none"> Venture's diamond drilling assay results are compatible with the observed mineralogy and the location of surface geochemical anomalism. Venture's laterite assay results agree well with the observed materials and historic laterite sampling. The historic RAB drilling results are considered compatible with surface geochemistry and known geology of the area. No further reviews have been carried out at this reconnaissance stage.

Section 2 Reporting of Exploration Results

(Criteria listed in the preceding section also apply to this section)

Criteria	JORC Code explanation	Commentary
Mineral tenement and land tenure status	<ul style="list-style-type: none"> Type, reference name/number, location and ownership including agreements or material issues with third parties such as joint ventures, partnerships, overriding royalties, native title interests, historical sites, wilderness or national park and environmental settings. The security of the tenure held at the time of reporting along with any known impediments to obtaining a licence to operate in the area. 	<ul style="list-style-type: none"> The Kulin Project consists of Exploration Licences 70/5077, 70/5084 and 70/5779 (granted) and of Exploration Licence 70/5801 (pending). The reported diamond drilling is entirely within E70/5077 held 100% by Venture Z Ltd, a wholly owned subsidiary of Venture Minerals Ltd. The reported historic drilling is entirely within E70/5084 held 100% by Exactical Pty Ltd. The reported laterite sampling is within E70/5077, E70/5084, E70/5779 and E70/5801 in the following proportion: 54%, 29%, 1% and 16% respectively. Venture Minerals has entered into an earn-in agreement with Exactical Pty Ltd over E70/5084
Exploration done by other parties	<ul style="list-style-type: none"> Acknowledgment and appraisal of exploration by other parties. 	<ul style="list-style-type: none"> BHP-UTAH Minerals International, S&D Treloar, Troy Resources NL and Exactical Pty Ltd are the main documented activity from previous explorers within the area now covered by the Kulin Project Refer to previous Venture Minerals announcements to the ASX and additionally available from http://ventureminerals.com.au
Geology	<ul style="list-style-type: none"> Deposit type, geological setting and style of mineralisation. 	<ul style="list-style-type: none"> The exploration area is within the South West Terrane of the Yilgarn Craton, WA. The Yilgarn Craton is widely recognised to contain world class precious and base metal deposits, and the South West Terrane includes the very large Boddington Au-Cu deposit, the large Edna May gold deposit, the moderate sized Tampia gold deposit, numerous smaller gold deposits such as Burgess Find, Griffins Find, and Bottle Neck and the Greenbushes Lithium-Tin-Tantalum deposit.

Criteria	JORC Code explanation	Commentary
Drill hole Information	<ul style="list-style-type: none"> A summary of all information material to the understanding of the exploration results including a tabulation of the following information for all Material drill holes: <ul style="list-style-type: none"> easting and northing of the drill hole collar elevation or RL (Reduced Level – elevation above sea level in metres) of the drill hole collar dip and azimuth of the hole down hole length and interception depth hole length. If the exclusion of this information is justified on the basis that the information is not Material and this exclusion does not detract from the understanding of the report, the Competent Person should clearly explain why this is the case. 	<ul style="list-style-type: none"> The reported drill hole coordinates, depths, orientations, hole lengths and significant results are given in Tables 1, 2, 4 and 5. Collar co-ordinates for Venture's drilling were determined by handheld Garmin GPS64 and elevation from a DTM derived from the SRTM 1 arc-second digital elevation data. Collar co-ordinates for historic drilling were determined by handheld GPS and elevation from a DTM derived from the SRTM 1 arc-second digital elevation data.
Data aggregation methods	<ul style="list-style-type: none"> In reporting Exploration Results, weighting averaging techniques, maximum and/or minimum grade truncations (e.g. cutting of high grades) and cut-off grades are usually Material and should be stated. Where aggregate intercepts incorporate short lengths of high grade results and longer lengths of low grade results, the procedure used for such aggregation should be stated and some typical examples of such aggregations should be shown in detail. The assumptions used for any reporting of metal equivalent values should be clearly stated. 	<ul style="list-style-type: none"> Assay results given in Tables 3 and 6 represent the drill cuttings intervals as sampled and assayed. Upper cuts have not been applied for the drilling data. Metal equivalent values are not used.
Relationship between mineralisation widths and intercept lengths	<ul style="list-style-type: none"> These relationships are particularly important in the reporting of Exploration Results. If the geometry of the mineralisation with respect to the drill hole angle is known, its nature should be reported. If it is not known and only the down hole lengths are reported, there should be a clear statement to this effect (e.g. 'down hole length, true width not known'). 	<ul style="list-style-type: none"> All intervals reported in Table 2 and 5 are down hole. Structural observations on orientated drill core agree with known surface geology and geochemistry, and the down hole thicknesses are estimated to represent >70% of the interpreted true thicknesses. The historic drill holes were reconnaissance in nature and detailed geometry of target mineralisation is not defined. There is no information on whether the historic drilling is orientated at a high angle (nearly perpendicular) to stratigraphy and observed mineralised zones. An appropriate drill section is included in the body of this release.
Diagrams	<ul style="list-style-type: none"> Appropriate maps and sections (with scales) and tabulations of intercepts should be included for any significant discovery being reported. These should include, but not be limited to a plan view of drill hole collar locations and appropriate sectional views. 	<ul style="list-style-type: none"> An appropriate exploration plan and section are included in this release.
Balanced reporting	<ul style="list-style-type: none"> Where comprehensive reporting of all Exploration Results is not practicable, representative reporting of both low and high grades and/or widths should be practiced to avoid misleading reporting of Exploration Results. 	<ul style="list-style-type: none"> All drill results given in Tables 3 and 6 represent the intervals as sampled and assayed. Of the total of 787 laterite samples collected and assayed for Cr some 41% assayed >500 ppm Cr and 10% assayed >1,200 ppm Cr. Of the total of 144 laterite samples collected by Venture and assayed for Pt some 19% assayed ≥5 ppb Pt, 8% assayed >10 ppb Pt and 2% assayed >20 ppb Pt. Of the total of 144 laterite samples collected by Venture and assayed for Pd some 8% assayed ≥5 ppb Pd, 2% assayed >10 ppb Pd and 1% assayed >20 ppb Pd.
Other substantive exploration data	<ul style="list-style-type: none"> Other exploration data, if meaningful and material, should be reported including (but not limited to): geological observations; geophysical survey results; geochemical survey results; bulk samples – size and 	<ul style="list-style-type: none"> The targets shown in the attached plans have been defined by geological mapping and surface geochemistry as previously reported in Venture Minerals announcements to the ASX.

Criteria	JORC Code explanation	Commentary
	method of treatment; metallurgical test results; bulk density, groundwater, geotechnical and rock characteristics; potential deleterious or contaminating substances.	<ul style="list-style-type: none"> Significant historic drill hole and geochemical results are presented in the accompanying map and section. The project is at a reconnaissance exploration stage and bulk density, geotechnical, hydrogeological and metallurgical work has not been done.
Further work	<ul style="list-style-type: none"> The nature and scale of planned further work (e.g. tests for lateral extensions or depth extensions or large-scale step-out drilling). Diagrams clearly highlighting the areas of possible extensions, including the main geological interpretations and future drilling areas, provided this information is not commercially sensitive. 	<ul style="list-style-type: none"> Venture proposes to conduct further geochemical sampling and airborne electromagnetic surveys in the coming months to refine and potentially extend the gold and nickel-PGE targets. Appropriate exploration target plans accompany this release.

About Venture

Venture Minerals Ltd (ASX: VMS) is entering an exciting phase as it looks to move from explorer to producer with production at the Riley Iron Ore Mine in northwest Tasmania. At the neighbouring Mount Lindsay Tin-Tungsten Project, higher Tin prices and the recognition of Tin as a fundamental metal to the battery revolution has refocused Venture's approach to developing Mount Lindsay. Already one of the world's largest undeveloped Tin-Tungsten deposits, the Company has commissioned an Underground Scoping Study on Mount Lindsay that will leverage off the previously completed feasibility work. In Western Australia, Chalice Mining (ASX: CHN) recently committed to spend up to \$3.7m in Venture's South West Project, to advance previous exploration completed by Venture to test a Julimar lookalike Nickel-Copper-PGE target. At the Company's Golden Grove North Project, it has already intersected up to 7% Zinc, 1.3% Copper and 2.1g/t Gold at Orcus and has identified several, strong EM conductors currently being drill tested which are situated along the 5km long VMS (Volcanogenic Massive Sulfide) Target Zone, along strike to the world class Golden Grove Zinc-Copper-Gold Mine. Venture has recently completed a maiden drill program designed to bring forward a potential new gold discovery at the Kulin Project.

COVID-19 Business Update

Venture is responding to the COVID-19 pandemic to ensure impacts are mitigated across all aspects of Company operations. Venture continues to assess developments and update the Company's response with the highest priority on the safety and wellbeing of employees, contractors and local communities. Venture will utilise a local workforce and contractors where possible, and for critical mine employees that are required to fly in and fly out, Venture has obtained the appropriate COVID-19 entry permits into Tasmania.

Authorised by:

Andrew Radonjic
Managing Director
Venture Minerals Limited
Telephone: +61 8 6279 9428
Email: admin@ventureminerals.com.au

For more information, please contact

Cameron Morse
Media enquiries
FTI Consulting
Telephone: +61 (0) 8 9321 8533
Mobile: +61 (0) 433 886 871
Email: cameron.morse@fticonsulting.com